

NOTE:
Please read all instructions
carefully before using this
product

Table of Contents

Safety Notice

Hardware Pack

Assembly Instruction

Parts List

Warranty

Ordering Parts

Model
GD-700

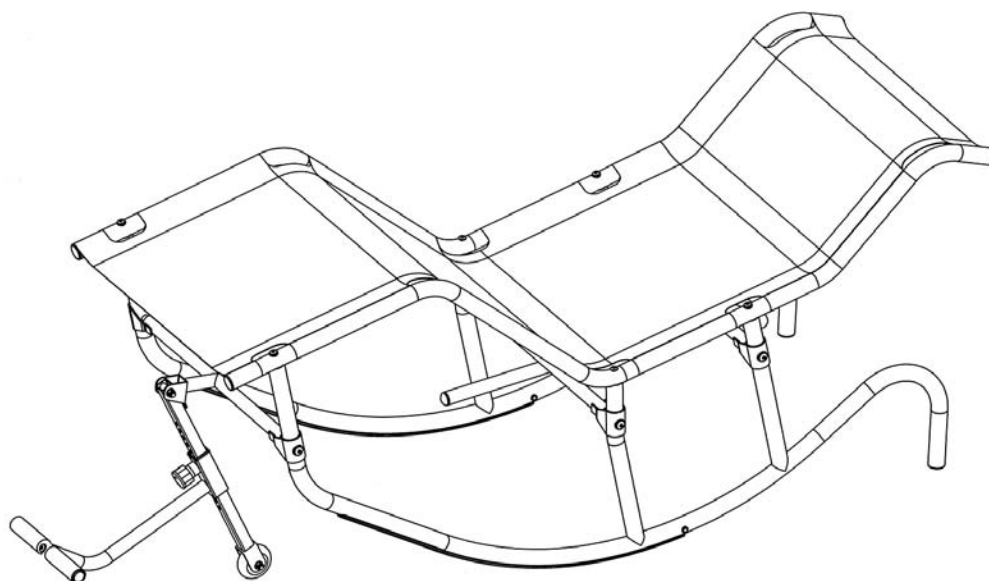
Retain This
Manual for
Reference

100126

OWNER'S
MANUAL

LOUNGE ROCKER

GD-700



IMPEX[®] INC.

14777 DON JULIAN RD., CITY OF INDUSTRY, CA 91746

Tel: (800) 999-8899 Fax: (626) 961-9966

www.impex-fitness.com

info@impex-fitness.com

TABLE OF CONTENTS

BEFORE YOU BEGIN.....	1
IMPORTANT SAFETY NOTICES.....	2
HARDWARE IDENTIFIER.....	3
ASSEMBLY INSTRUCTIONS.....	5
SET UP LOUNGE ROCKER POSITION.....	11
EXPLODED DIAGRAM.....	13
PARTS LIST.....	14
WARRANTY.....	15
ORDERING PARTS.....	15

BEFORE YOU BEGIN

Thank you for selecting the LOUNGE ROCKER GD-700 by IMPEX®. For your safety and benefit, read this manual carefully before using the Hammock. As a manufacturer, we are committed to provide you complete customer satisfaction. If you have any questions, or find there are missing or damaged parts, we guarantee you complete satisfaction through direct assistance from our factory. **DO NOT RETURN THE UNIT TO THE STORE!** To avoid unnecessary delays, please call our *TOLL-FREE customer service number*. Our Customer Service Agents will provide immediate assistance to you.

Toll-Free Customer Service Number

1-800-999-8899

Mon. – Fri. 9 a.m. – 5 p.m. PST

www.impex-fitness.com

info@impex-fitness.com

IMPORTANT SAFETY NOTICE

Please read the entire manual before assembling or operating the equipment. In particular, note the following safety precautions to reduce the likelihood of injury.

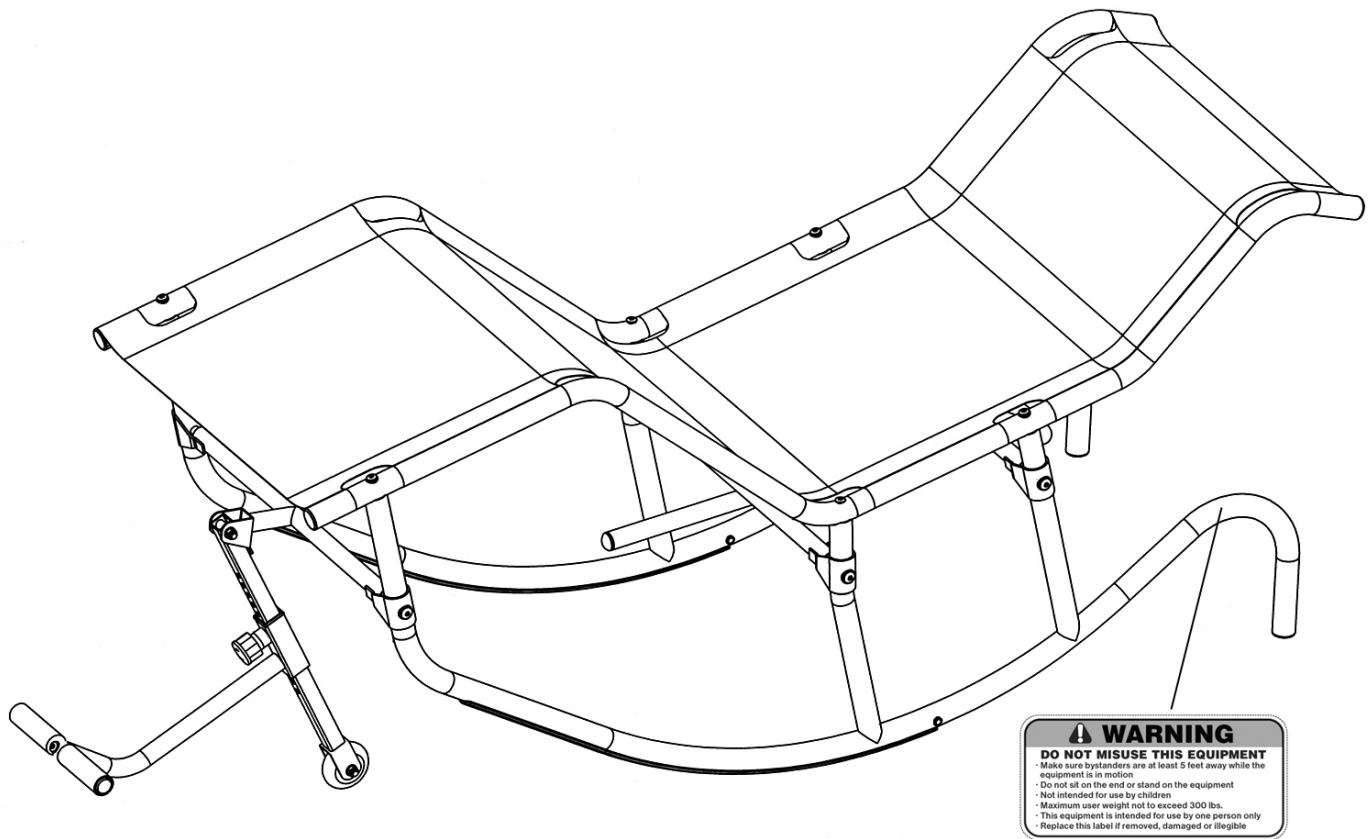
1. Children must be supervised at all times and never left unattended with the unit.
2. Make sure the surfaces are free of objects that may cause tipping over.
3. Place the equipment on level ground, not less than 6 ft (1.8 m) from any structure or obstruction such as fence, garage, house, overhanging branches, laundry lines, or electrical wires.
4. Make sure bystanders are at least 5 feet away from the equipment while it is in motion. No one should be allowed to walk close to, in front of, behind, or between moving items.
5. Do not sit on the end or stand on the Lounge Rocker. This could cause the Lounge Rocker to tip over and result in injury.
6. The Lounge Rocker is not designed to use by children.
7. Maximum user weight is 300 lbs.
8. Only one person should be using the Lounge Rocker at a time.

Care and Maintenance

1. Periodically inspect all parts. Check all bolts twice monthly during the usage season for tightness and tighten as required. It is particularly important that this procedure be followed at the beginning of each season.
2. Replace any worn and damaged part immediately. Check all bolts and sharp edges twice monthly during usage season to be certain they are in place. Replace when necessary. It is especially important to do this at the beginning of each new season.
3. Use mild household spray cleaners and/or a damp rag to wipe clean. Do not use harsh cleaning chemicals.
4. Sand rusted areas on tubular members and repaint using a non-lead based paint meeting the requirements of Title 16 CFR Part 1303.
5. Disposal Instructions – The equipment can be safely disassembled and disposed without unreasonable hazards. Call your local recycle agency regarding details of recycling.
6. Inspect before and periodically during use for frayed ropes and torn seam. Call the customer service department if any defects were found.
7. Inspect before and periodically during use for excessive rust, integrity of the welds, and twist in hanging hardware. Call the customer service department if any defects were found.

SAVE THESE INSTRUCTIONS.

WARNING LABEL PLACEMENT



The Warning Label shown here has been placed on the Stabilizer Frame. If the label is missing or illegible, please call customer service at 1-800-999-8899 for replacement. Apply the label in location shown.

HARDWARE PACK

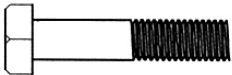
NOTE: The following parts are not drawn to scale. Please use your own ruler to measure the size.



#2 M8 x 2" Allen Bolt (Qty 7)



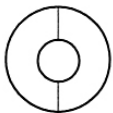
#6 M10 x 2" Allen Bolt (Qty 6)



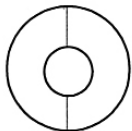
#16 M8 x 1 5/8" Hex Bolt (Qty 2)



#19 M8 Aircraft Nut (Qty 2) Tool #6 Allen Wrench (Qty 1)



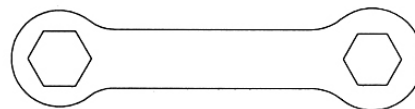
#3 Ø 7/8" x Ø 5/16" Curved Washer (Qty 7)



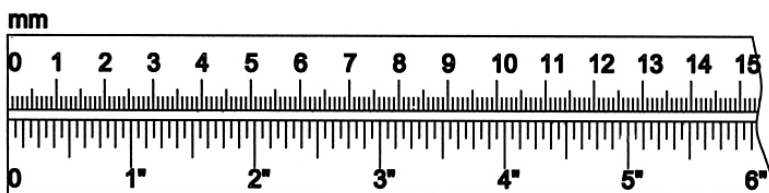
#7 Ø 1" x Ø 3/8" Curved Washer (Qty 6)



#18 Ø 5/8" Washer (Qty 2)



Tool Crossing Wrench (Qty 2)



ASSEMBLY INSTRUCTION

Tool Required for Assembling the Machine: Allen Wrench and Crossing Wrenches

NOTE: It is strongly recommended that two or more people assemble this machine to avoid possible injury.

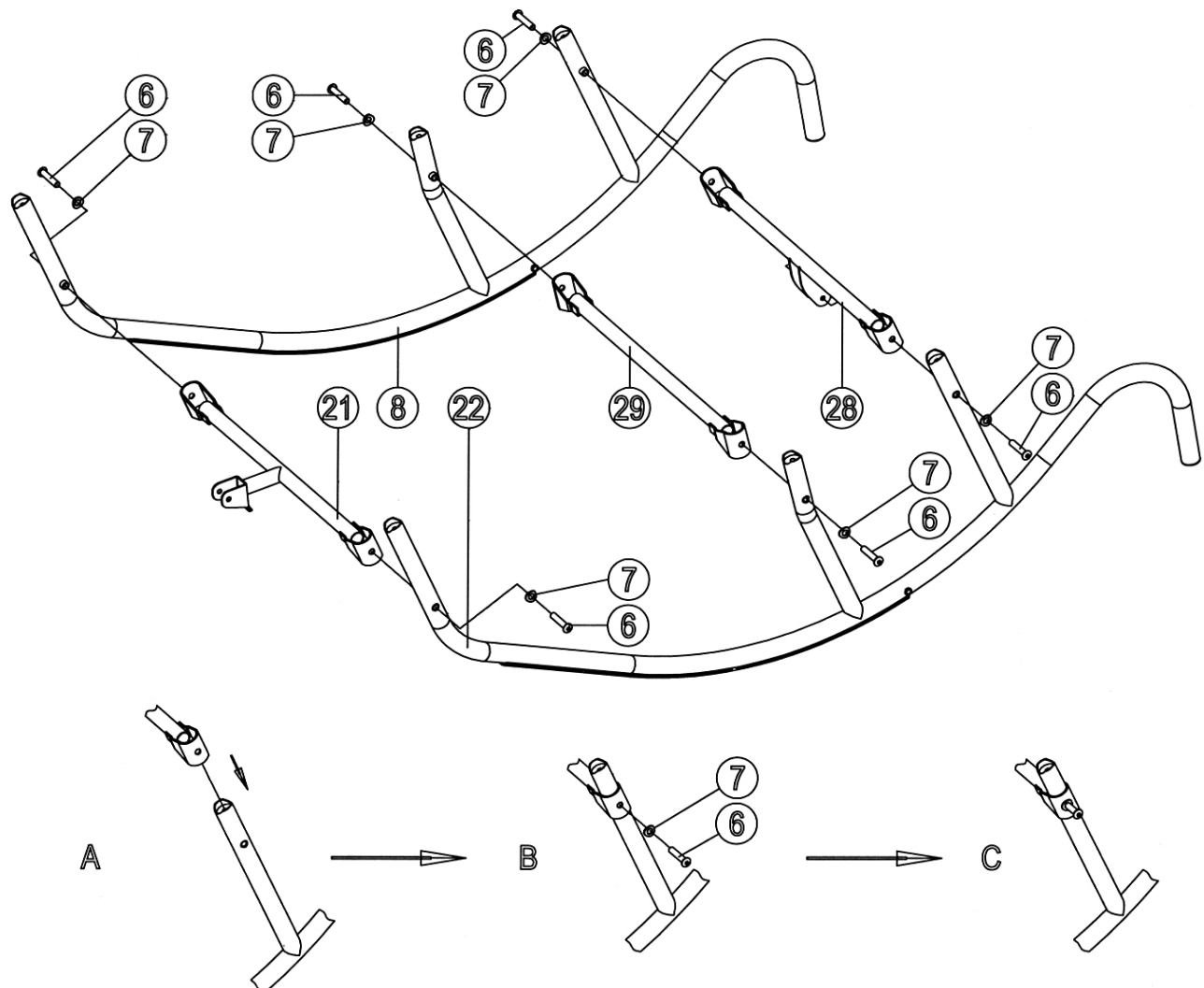
STEP 1 (See Diagram 1)

A.) **Do not fasten Bolts until instructed to do so.**

B.) Slide the Front Cross Tube (#21) onto the front of the Right and Left Base (#8 & #22). Secure each end of the Front Cross Tube with one M10 x 2" Allen Bolt (#6) and one Ø 1" x Ø 3/8" Curved Washer (#7).

C.) Repeat the procedure B above to install the Rear Cross Tube (#28) and Middle Cross Tube (#29) onto the Right and Left Base.

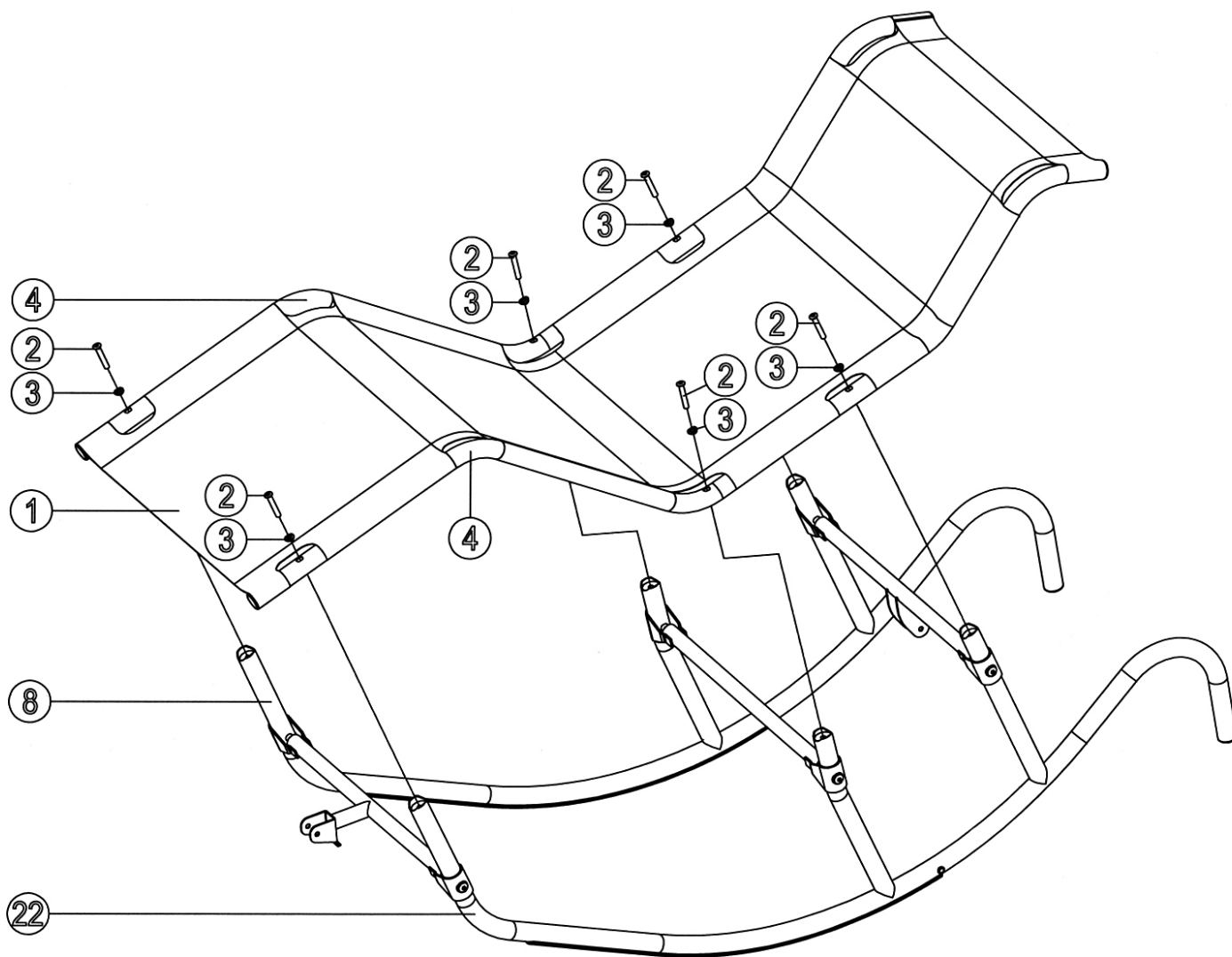
DIAGRAM 1



Step 2 (See Diagram 2)

- A.) **Do not fasten Bolt until all six M8 x 2" Allen Bolts (#2) are installed.**
- B.) Place the Lounge Bed (#1) onto the six upright posts on the Right and Left Base (#8 & #22). Align the holes on the Lounge Bed Frame (#4) to the holes on the six upright posts.
- C.) Secure each hole on the Lounge Bed to each upright post with one M8 x 2" Allen Bolt (#2) and one $\varnothing 7/8"$ x $5/16"$ Curved Washer (#3).
- D.) **Securely fasten all Bolts installed in Procedure C.**

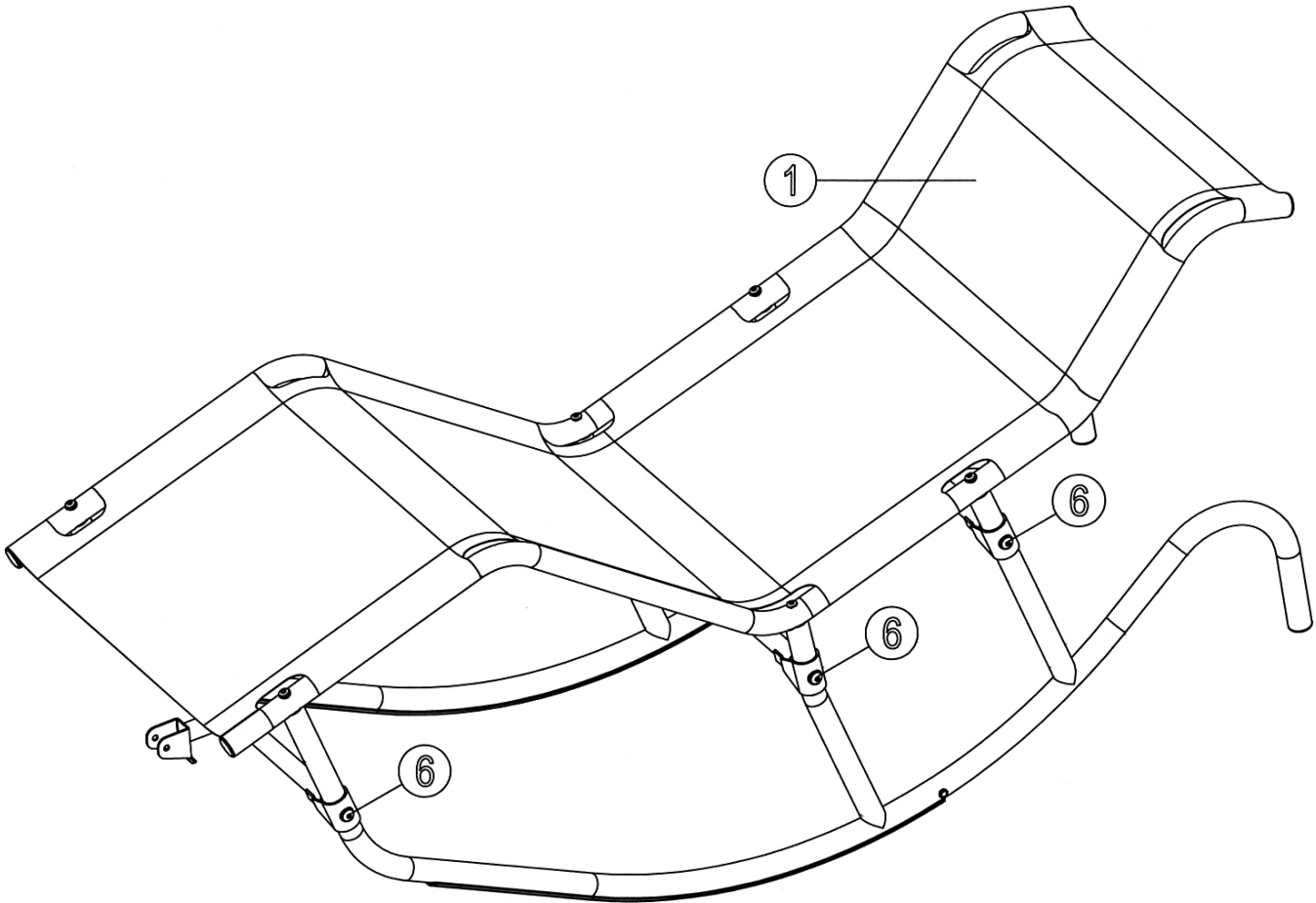
DIAGRAM 2



Step 3 (See Diagram 3)

A.) Securely fasten all six Allen Bolts (#6) installed in Step-1.

DIAGRAM 3



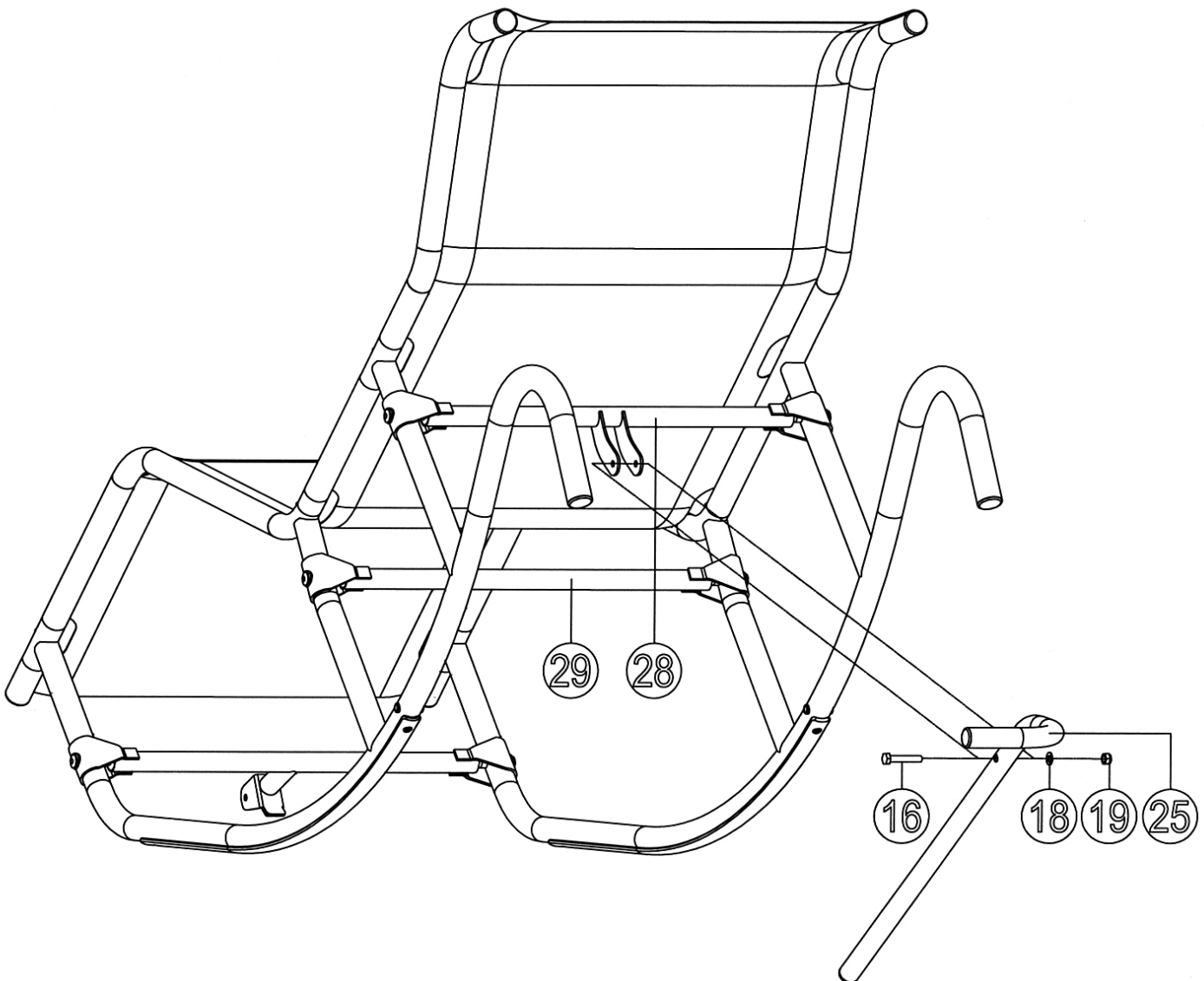
Step 4 (See Diagram 4)

A.) Attach the Upright Stand (#25) to the bracket on the Rear Cross Tube (#28). Secure it with one M8 x 5/8" Hex Bolt (#16), one Ø 5/8" Washer (#18), and one M8 Aircraft Nut (#19).

Note: Do not over tighten the Nut and Bolt. The Upright Stand needs to be able to move smoothly.

B.) Turn the Upright Stand stands on floor or horizontally under Middle Cross Tube (#29) to set up various Lounge Rocker position.

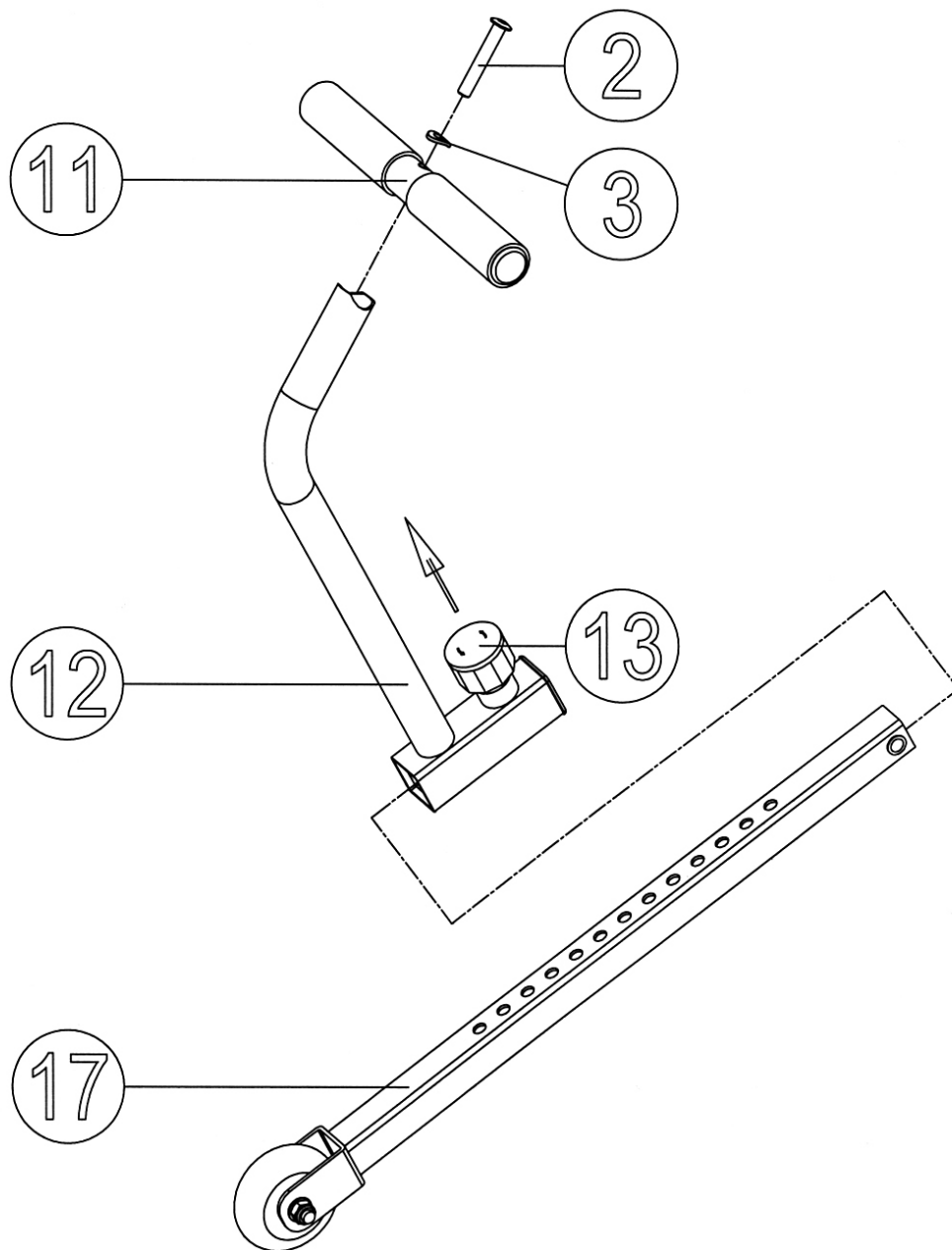
DIAGRAM 4



Step 5 (See Diagram 5)

- A.) Attach the Foot Rest Tube (#11) to the Foot Actuator (#12). Secure it with one M8 x 2" Allen Bolt (#2) and one $\text{Ø } 7/8" \times 5/16"$ Curved Washer (#3).
- B.) Slide the Foot Rest Support onto the Rocker Tube (#17). Use the Pop Pin (#13) to lock the Foot Actuator at selected hole to obtain the desired footrest position.

DIAGRAM 5

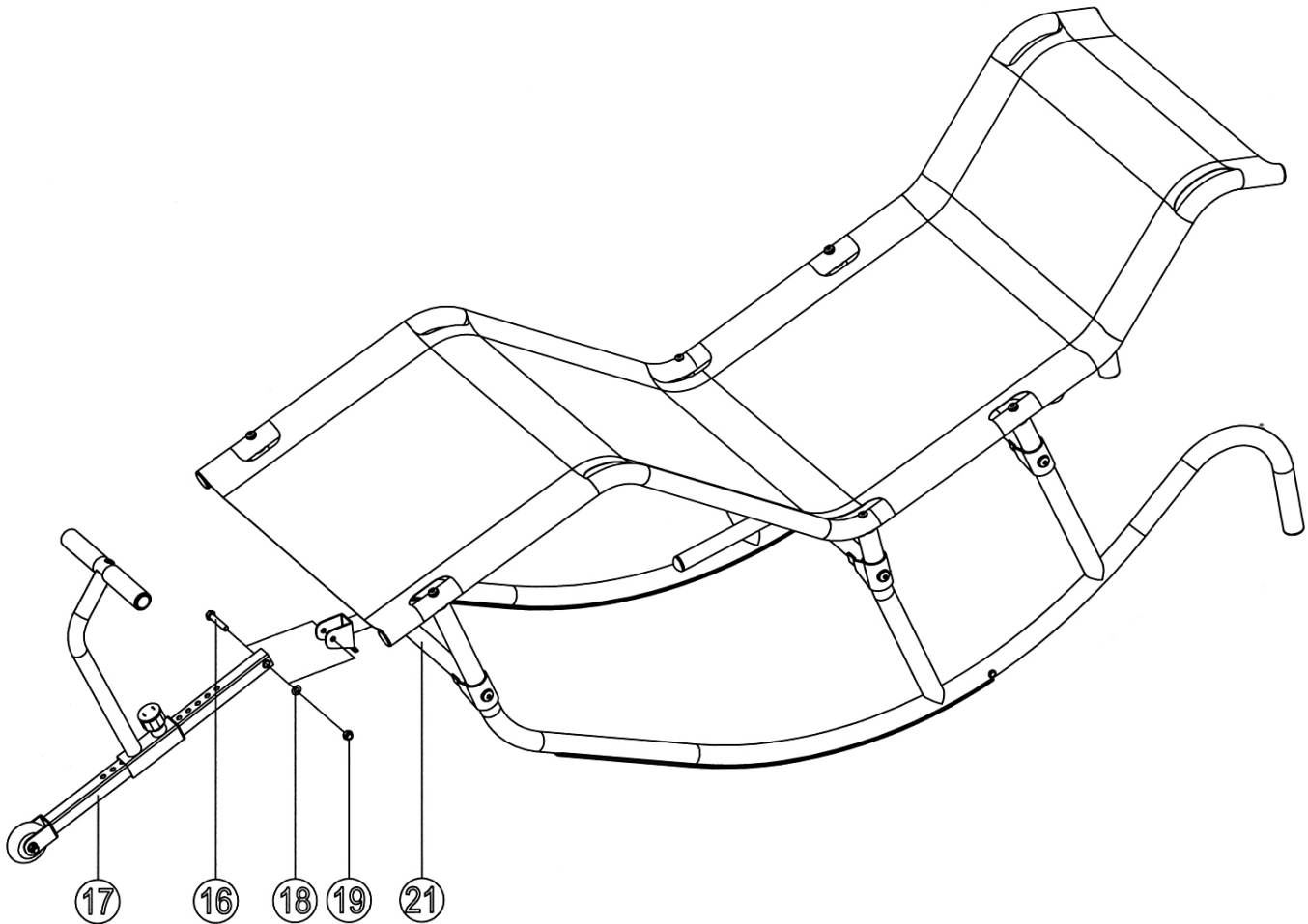


Step 6 (See Diagram 6)

A.) Attach the Rocker Tube (#17) to the bracket on Front Cross Tube (#21). Secure it with one M8 x 1 5/8" Hex Bolt (#16), one Ø 5/8" Washer (#18), and one M8 Aircraft Nut (#19).

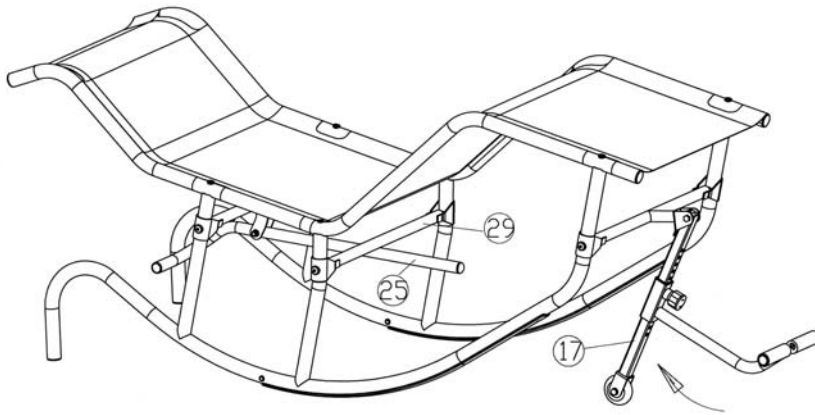
Note: Do not over tighten the Nut and Bolt. The Rocker Tube needs to be able to move smoothly.

DIAGRAM 6



Set up Lounge Rocker position

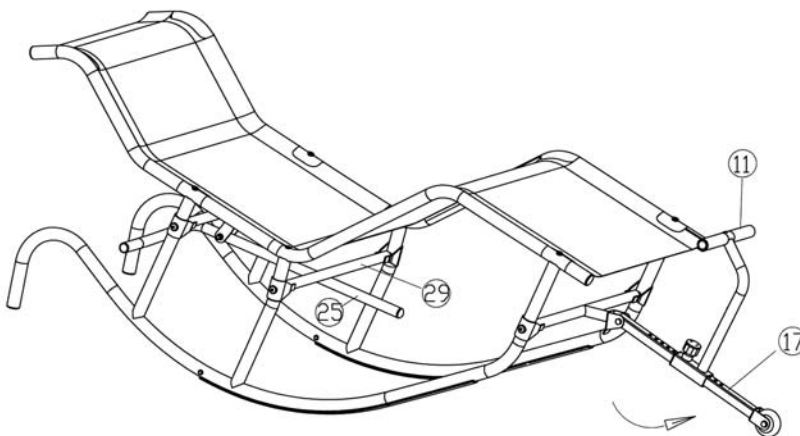
1. Neutral Position



Turn the Upright Stand (#25) horizontally under the Middle Cross Tube (#29).

Tuck the Rocker Tube (#17) under the Lounge Bed so the Rocker Tube could lean on the floor.

2. Rocking Position

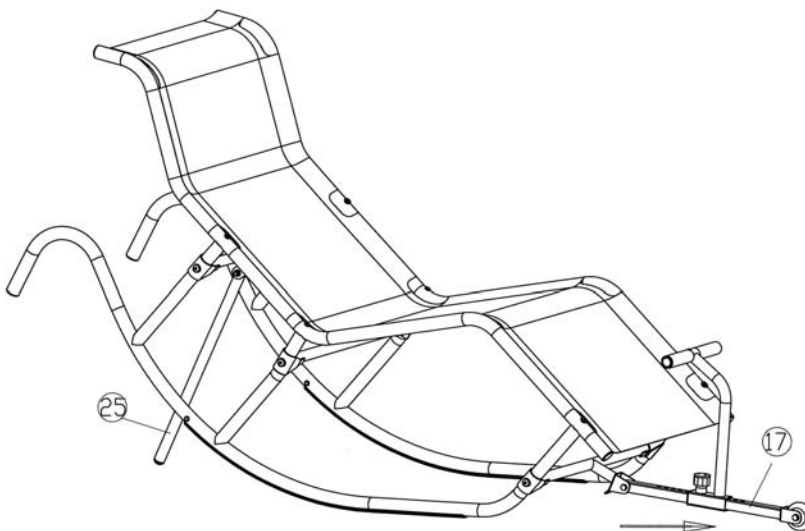


Turn the Upright Stand (#25) horizontally under the Middle Cross Tube (#29).

Pull the Rocker Tube (#17) forward.

Step both feet on the Foot Rest Tube (#11); gently push the Foot Rest tube, and the Lounge will start rocking. The Lounge Rocker can rock up to approx. 30° high.

3. Upright Seated Position



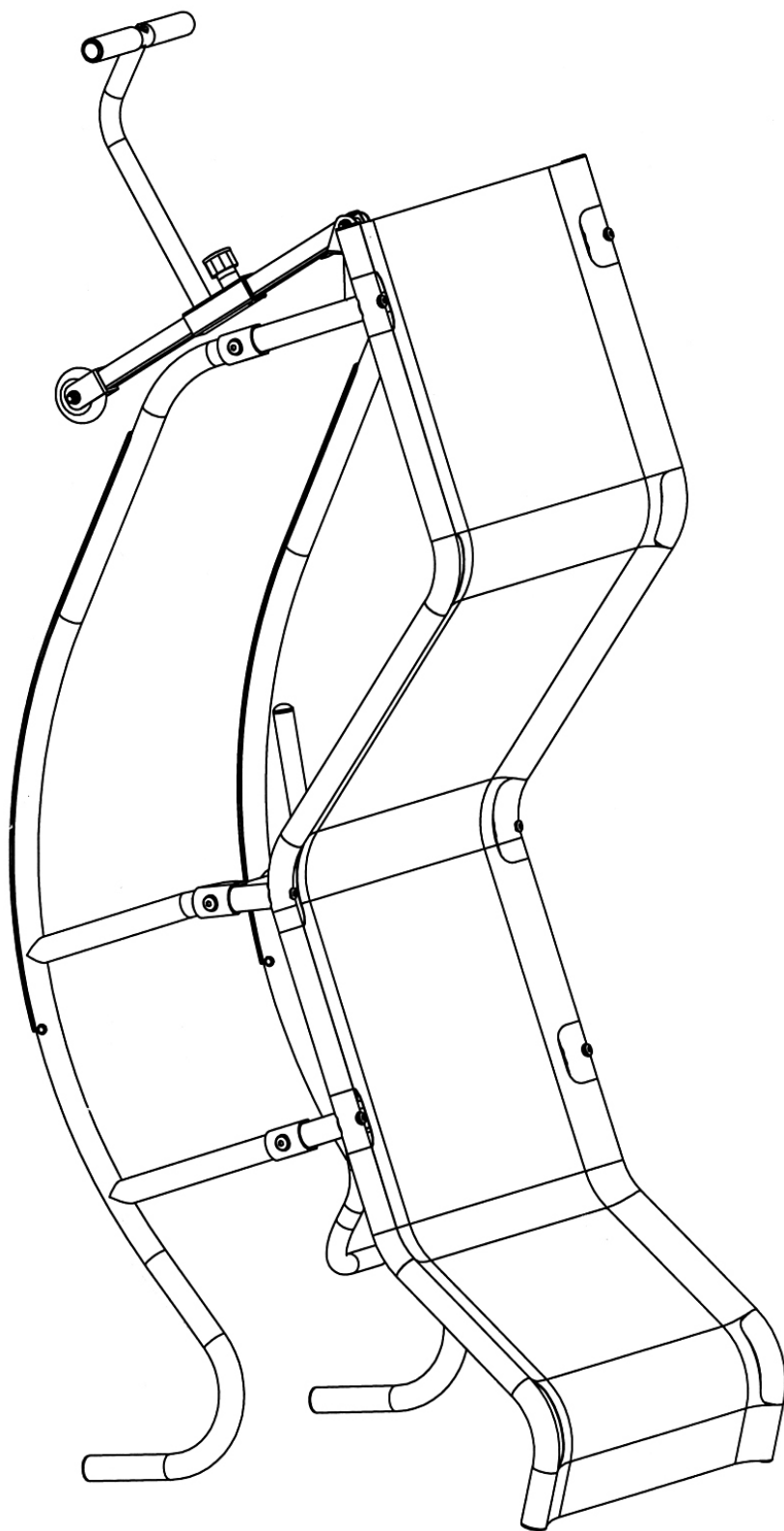
Set Lounge upright and seated for reading or watching TV.

Pull the Rocker Tube forward.

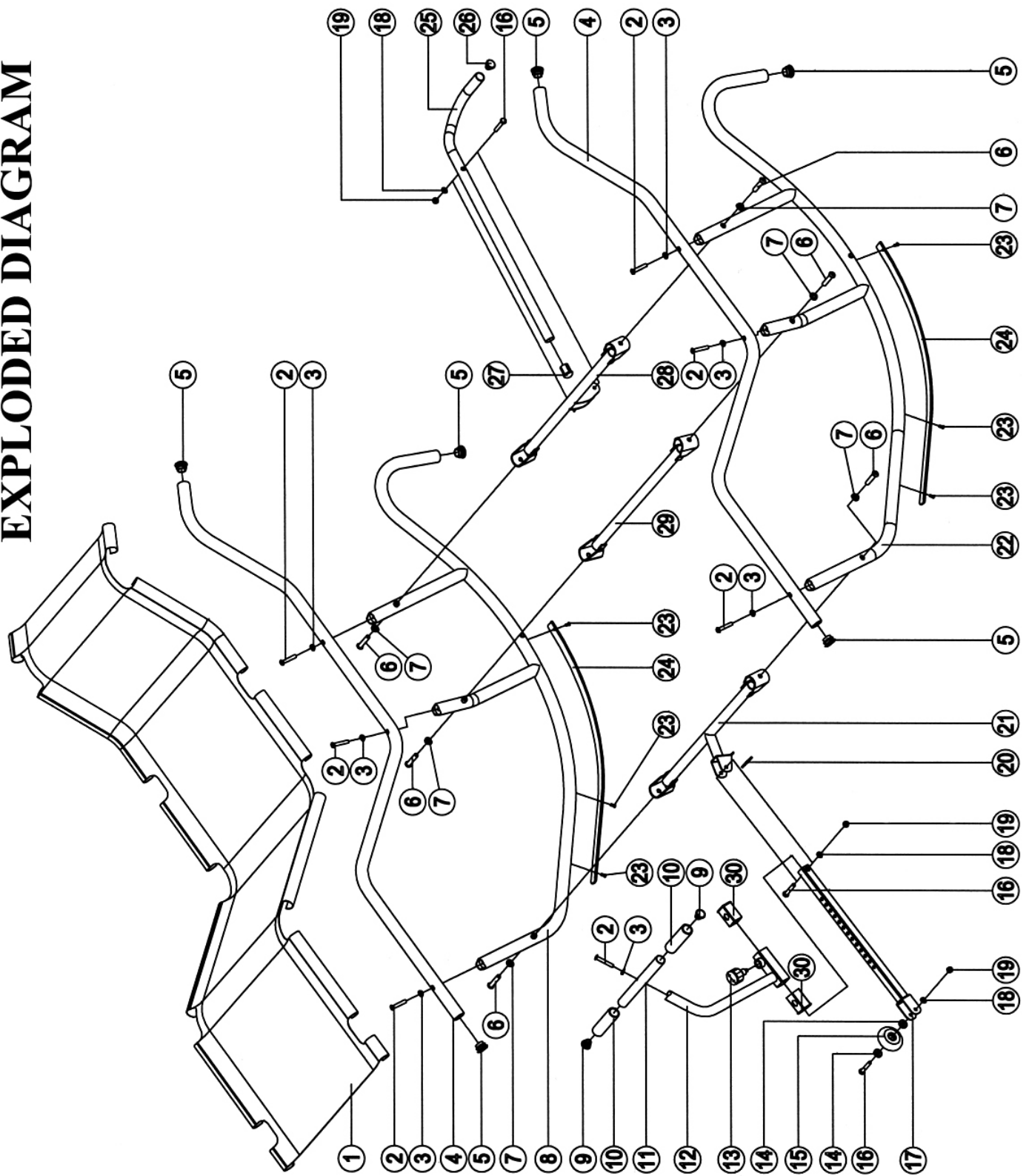
Turn the Upright Stand to stand on the floor.

Storage

Lift up the front of Lounge vertically for space saving storage.



EXPLODED DIAGRAM



Parts list

KEY NO.	DESCRIPTION	Q'ty
1	Lounge Bed	1
2	M8 x 2" Allen Bolt	7
3	Ø 7/8" x 5/16 Curved Washer	7
4	Lounge Bed Frame	2
5	Ø 1 ¼" End Cap	6
6	M10 x 2" Allen Bolt	6
7	Ø 1" x 3/8" Curved Washer	6
8	Right Base	1
9	Ø 1" End Cap	2
10	Grip	2
11	Foot Rest Tube	1
12	Foot Actuator	1
13	Pop Pin	1
14	Ball Bearing	2
15	Roller Wheel	1
16	M8 x 1 5/8" Hex Bolt	3
17	Rocker Tube	1
18	Ø 5/8" Washer	3
19	M8 Aircraft Nut	3
20	Spacer	1
21	Front Cross Tube	1
22	Left Base	1
23	M5 x 5/8" Philips Screw	6
24	Nylon Buffer Strip	2
25	Upright Stand	1
26	Ø 1" Floor Post End Cap	1
27	Rubber Bumper	1
28	Rear Cross Tube	1
29	Middle Cross Tube	1
30	Sleeve	2

IMPEX[®] INC.

LIMITED WARRANTY

IMPEX INC ("IMPEX[®]") warrants this product to be free from defects in workmanship and material, under normal use and service conditions, for a period of 2 YEARS from the date of purchase. This warranty extends only to the original purchaser. IMPEX's obligation under this Warranty is limited to replacing or repairing, at IMPEX's option.

All returns must be pre-authorized by IMPEX. Pre-authorization may be obtained by calling IMPEX Customer Service Department at 1-800-999-8899. All freights on products returned to IMPEX must be prepaid by the customer. This warranty does not extend to any product or damage to a product caused by or attributable to freight damage, abuse, misuse, improper or abnormal usage or repairs. No other warranty beyond that specifically set forth above is authorized by IMPEX.

IMPEX is not responsible or liable for indirect, special or consequential damages arising out of or in connection with the use or performance of the product or other damages with respect to any economic loss, loss of property, loss of revenues or profits, loss of enjoyments or use, costs of removal, installation or other consequential damages or whatsoever natures. Some states do not allow the exclusion or limitation of incidental or consequential damages. Accordingly, the above limitation may not apply to you.

The warranty extended hereunder is in lieu of any and all other warranties and any implied warranties of merchantability or fitness for a particular purpose is limited in its scope and duration to the terms set forth herein. Some states do not allow limitations on how long an implied warranty lasts. Accordingly, the above limitation may not apply to you.

This warranty gives you specific legal right. You may also have other rights which vary from state to state. Register on-line at www.impex-fitness.com

IMPEX[®] INC.
14777 Don Julian Rd.,
City of Industry, CA 91746

ORDERING REPLACEMENT PARTS

Replacement parts can be ordered by calling our Customer Service Department toll-free at **1-800-999-8899** during our regular business hours: Monday through Friday, 9 am until 5 pm Pacific standard time.
info@impex-fitness.com

When ordering replacement parts, always give the following information.

1. Model
2. Description of Part
3. Part Number
4. Date of Purchase