

NOTE:  
Please read all instructions  
carefully before using this  
product

Table of Contents

Safety Notice

Hardware Pack

Assembly Instruction

Parts List

Warranty

Ordering Parts

Model  
GD-800

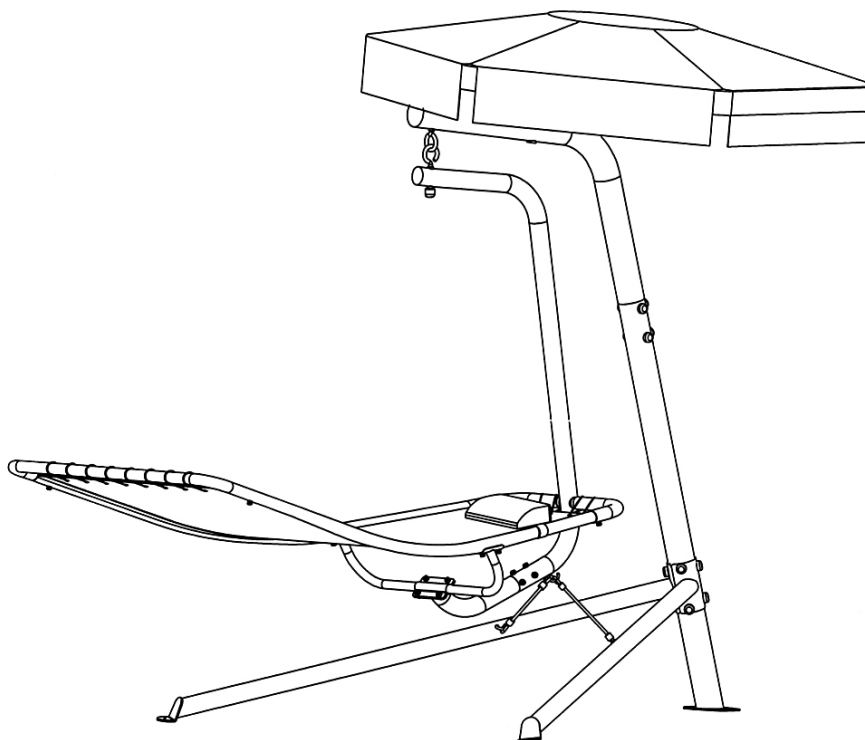
Retain This  
Manual for  
Reference

11-21-06

OWNER'S  
MANUAL

# Caribbean Lounge Chair®

## GD-800



**IMPEX® INC.**

14777 DON JULIAN RD., CITY OF INDUSTRY, CA 91746

Tel: (800) 999-8899 Fax: (626) 961-9966

**[www.impex-fitness.com](http://www.impex-fitness.com)**

**[info@impex-fitness.com](mailto:info@impex-fitness.com)**

## TABLE OF CONTENTS

BEFORE YOU BEGIN.....	1
IMPORTANT SAFETY NOTICES.....	2
HARDWARE IDENTIFIER.....	3
ASSEMBLY INSTRUCTIONS.....	5
OPERATION.....	19
EXPLODED DIAGRAM.....	20
PARTS LIST.....	21
WARRANTY.....	22
ORDERING PARTS.....	22

---

## BEFORE YOU BEGIN

Thank you for selecting the Caribbean Lounge Chair GD-800 by IMPEX®. For your safety and benefit, read this manual carefully before using the machine. As a manufacturer, we are committed to provide you complete customer satisfaction. If you have any questions, or find there are missing or damaged parts, we guarantee you complete satisfaction through direct assistance from our factory. **DO NOT RETURN THE UNIT TO THE STORE!** To avoid unnecessary delays, please call our *TOLL-FREE customer service number*. Our Customer Service Agents will provide immediate assistance to you.

Toll-Free Customer Service Number

1-800-999-8899

Mon. – Fri. 9 a.m. – 5 p.m. PST

[www.impex-fitness.com](http://www.impex-fitness.com)

[info@impex-fitness.com](mailto:info@impex-fitness.com)

## **IMPORTANT SAFETY NOTICE**

Please read the entire manual before assembling or operating the equipment. In particular, note the following safety precautions to reduce the likelihood of injury.

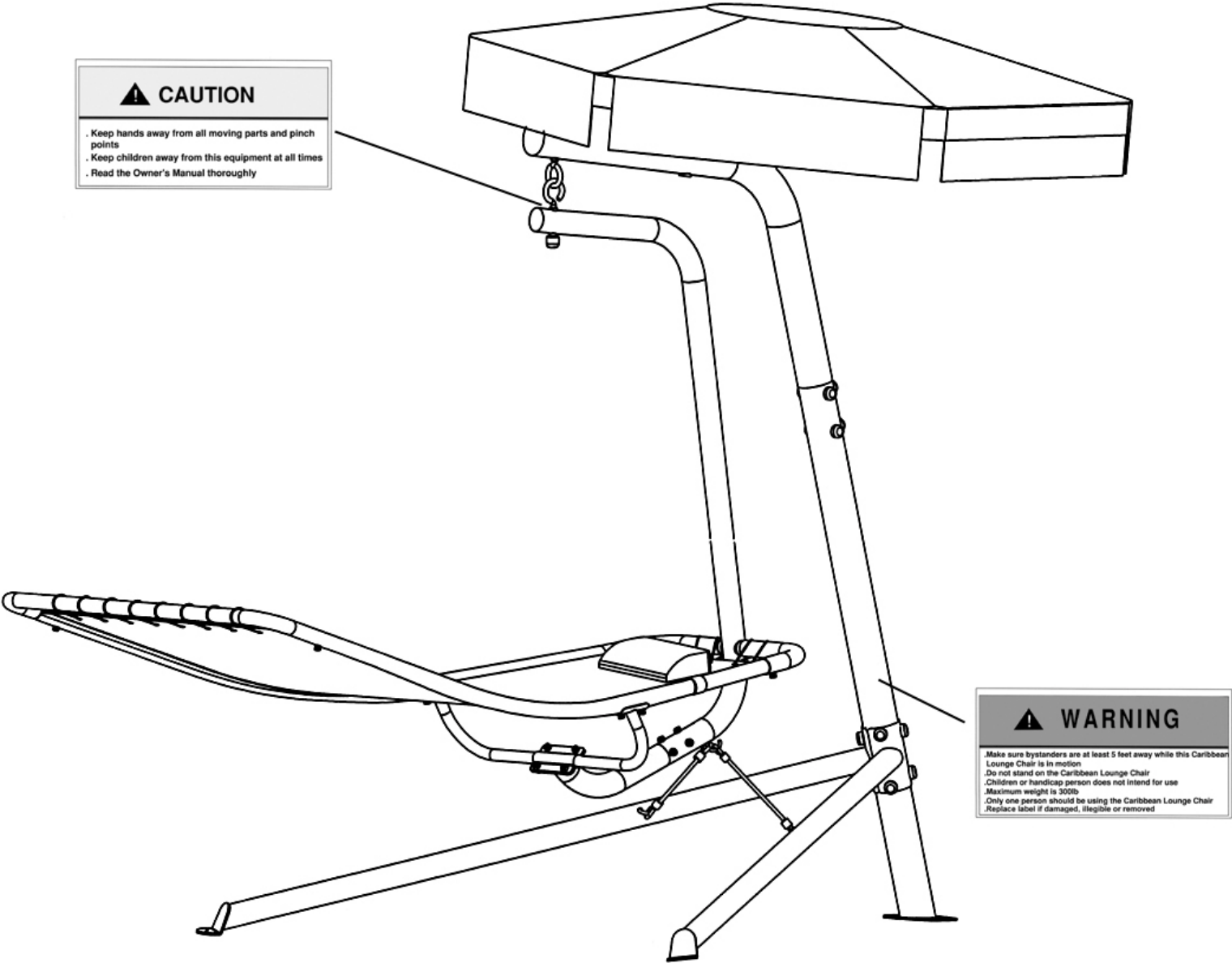
1. Children must be supervised at all times and never left unattended with the unit.
2. Make sure the surfaces are free of objects that may cause tipping over.
3. Place the equipment on level ground, not less than 6 ft (1.8 m) from any structure or obstruction such as fence, garage, house, overhanging branches, laundry lines, or electrical wires.
4. Lock the Caribbean Lounge Chair with the Cables when not in use.
5. Make sure bystanders are at least 5 feet away from the equipment while it is in motion. No one should be allowed to walk close to, in front of, behind, or between moving items.
6. Keep hands away from the pivot area.
7. Do not stand on the Caribbean Lounge Chair. This could cause the bed to tip over and result in injury.
8. The Caribbean Lounge Chair is not designed to use by children or handicap persons.
9. Maximum user's weight capacity 300 lbs.
10. Only one person should be using the Caribbean Lounge Chair at a time.

## **Care and Maintenance**

1. Periodically inspect all parts. Check all nuts and bolts twice monthly during the usage season for tightness and tighten as required. It is particularly important that this procedure be followed at the beginning of each season.
2. Replace any worn and damaged part immediately. Check all coverings for bolts and sharp edges twice monthly during usage season to be certain they are in place. Replace when necessary. It is especially important to do this at the beginning of each new season.
3. Use mild household spray cleaners and/or a damp rag to wipe clean. Do not use harsh cleaning chemicals.
4. Sand rusted areas on tubular members and repaint using a nonlead-based paint meeting the requirements of Title 16 CFR Part 1303.
5. Disposal Instructions – The equipment can be safely disassembled and disposed without unreasonable hazards. Call your local recycle agency regarding details of recycling.
6. Inspect before and periodically during use for frayed ropes and torn seam. Call the customer service department if any defects were found.
7. Inspect before and periodically during use for excessive rust, integrity of the welds, and twist in hanging hardware. Call the customer service department if any defects were found.

**SAVE THESE INSTRUCTIONS.**

WARNING LABEL PLACEMENT



# HARDWARE IDENTIFIER

## Part# Description

## Identifier

#12 Ø ¾" Washer (Qty 6)



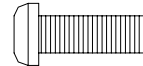
#13 Ø 5/8" Curved Washer (Qty 8)



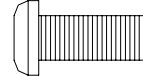
#14 Ø 5/8" Lock Washer (Qty 8)



#15 M8 x ¾" Allen Bolt (Qty 12)



#16 M10 x ¾" Allen Bolt (Qty 12)



#17 Ø ¾" Lock Washer (Qty 12)



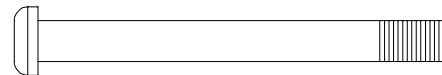
#18 Ø ¾" Curved Washer (Qty 6)



#20 Ø 1 1/8" Cover Cap (Qty 14)



#21 M12 x 4 ½" Allen Bolt (Qty 4)



#22 Ø1" Washer (Qty 8)



#23 M12 Aircraft Nut (Qty 4)



#27 Ø 5/8" Washer (Qty 4)



#31 M8 Aircraft Nut (Qty 4)



#42 M6 x ½" Allen Bolt (Qty 6)



#43 Ø ½" Lock Washer (Qty 6)



## Tools:

4# Allen Wrench (Qty 1)



6# Allen Wrench (Qty 1)



8# Allen Wrench (Qty 1)



# ASSEMBLY INSTRUCTION

**Tools Required Assembling the Machine: Two Adjustable Wrenches and Allen Wrench**

**NOTE:** It is strongly recommended two or more people assembling this machine to avoid possible injury.

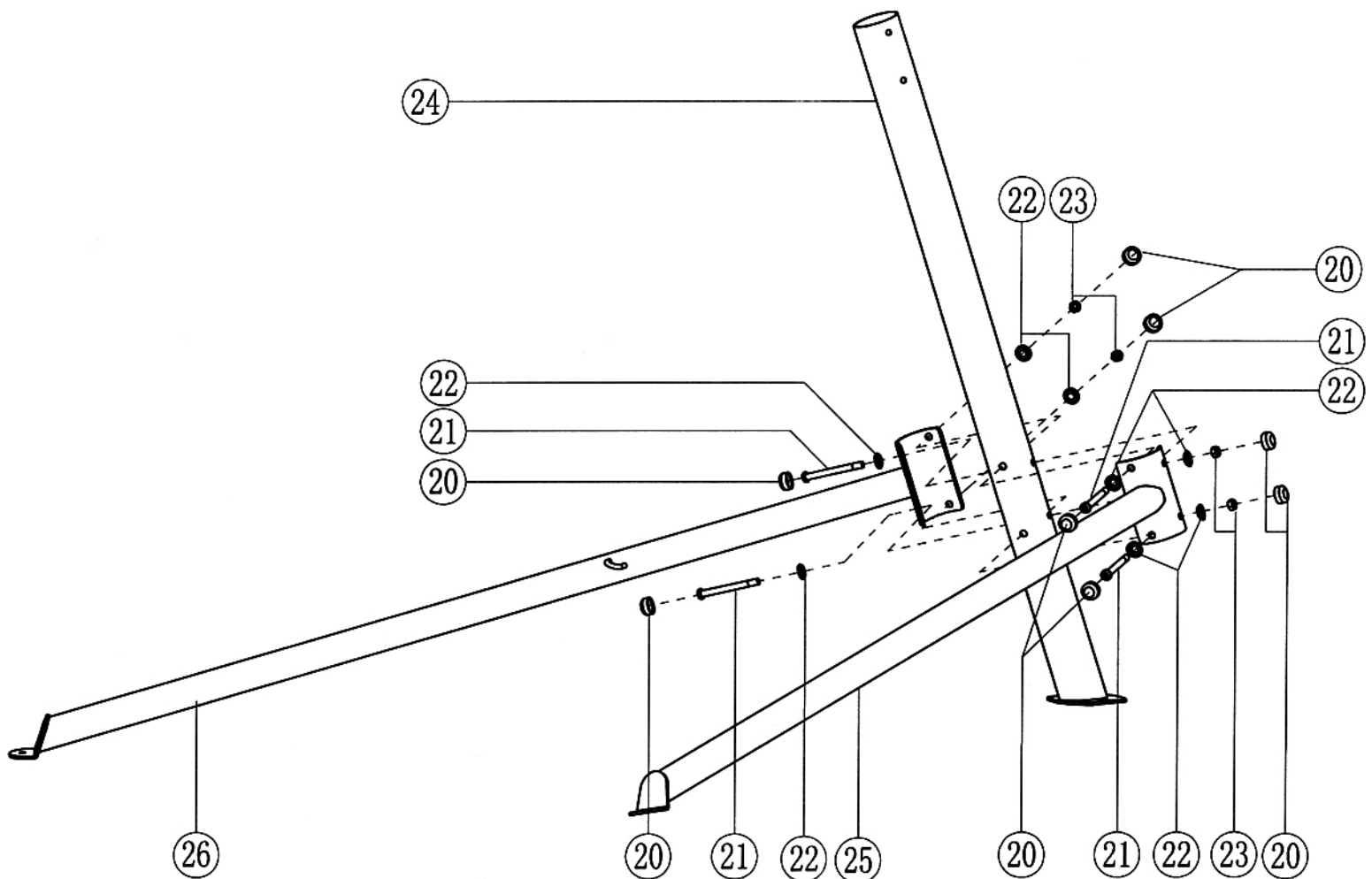
## STEP 1-1 (See Diagram 1-1)

A.) Attach the Left & Right Main Post Support (#25 & #26) to the Main Post (#24) from each side.

B.) Align the holes and securely tighten them together with four M12 x 4 1/2" Allen Bolts (#21), eight Ø 1" Washers (#22), and four M12 Aircraft Nuts (#23).

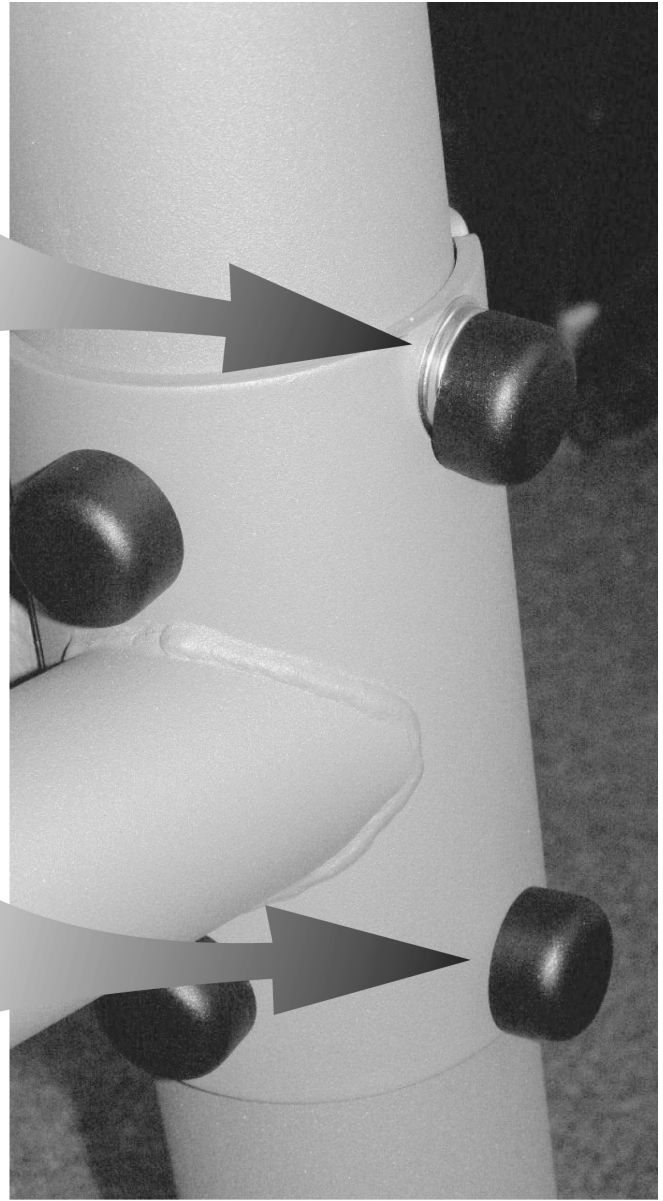
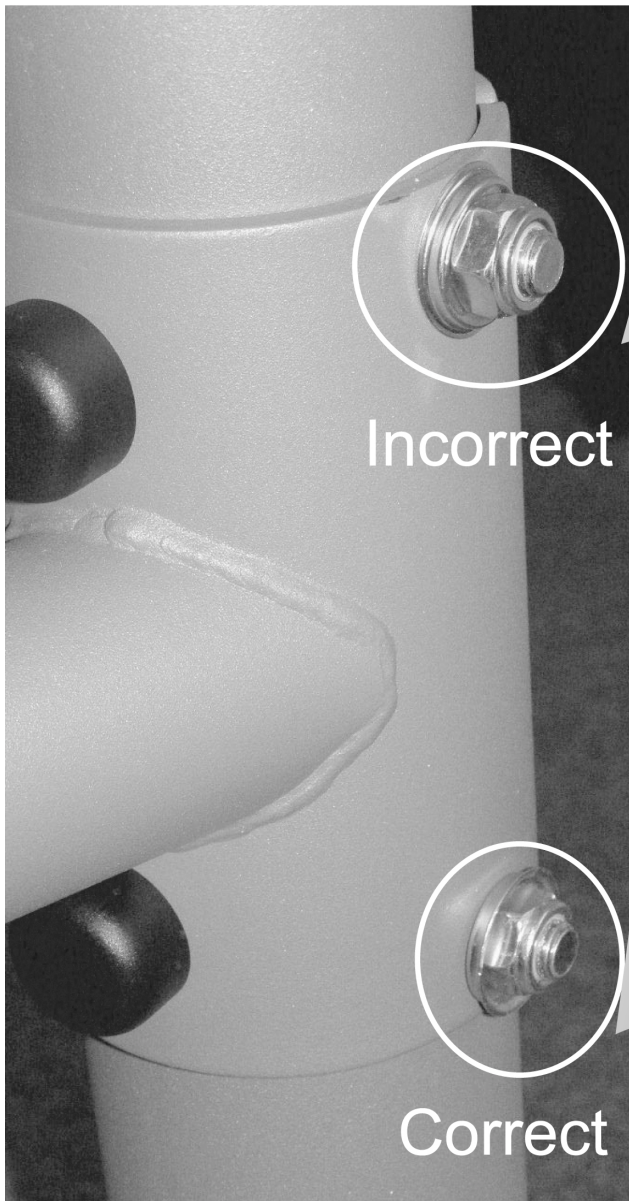
C.) Cover all Bolts and Nuts with eight Ø 1 1/8" Cover Caps (#20). See Note on next page.

**DIAGRAM 1-1**



**Note:**

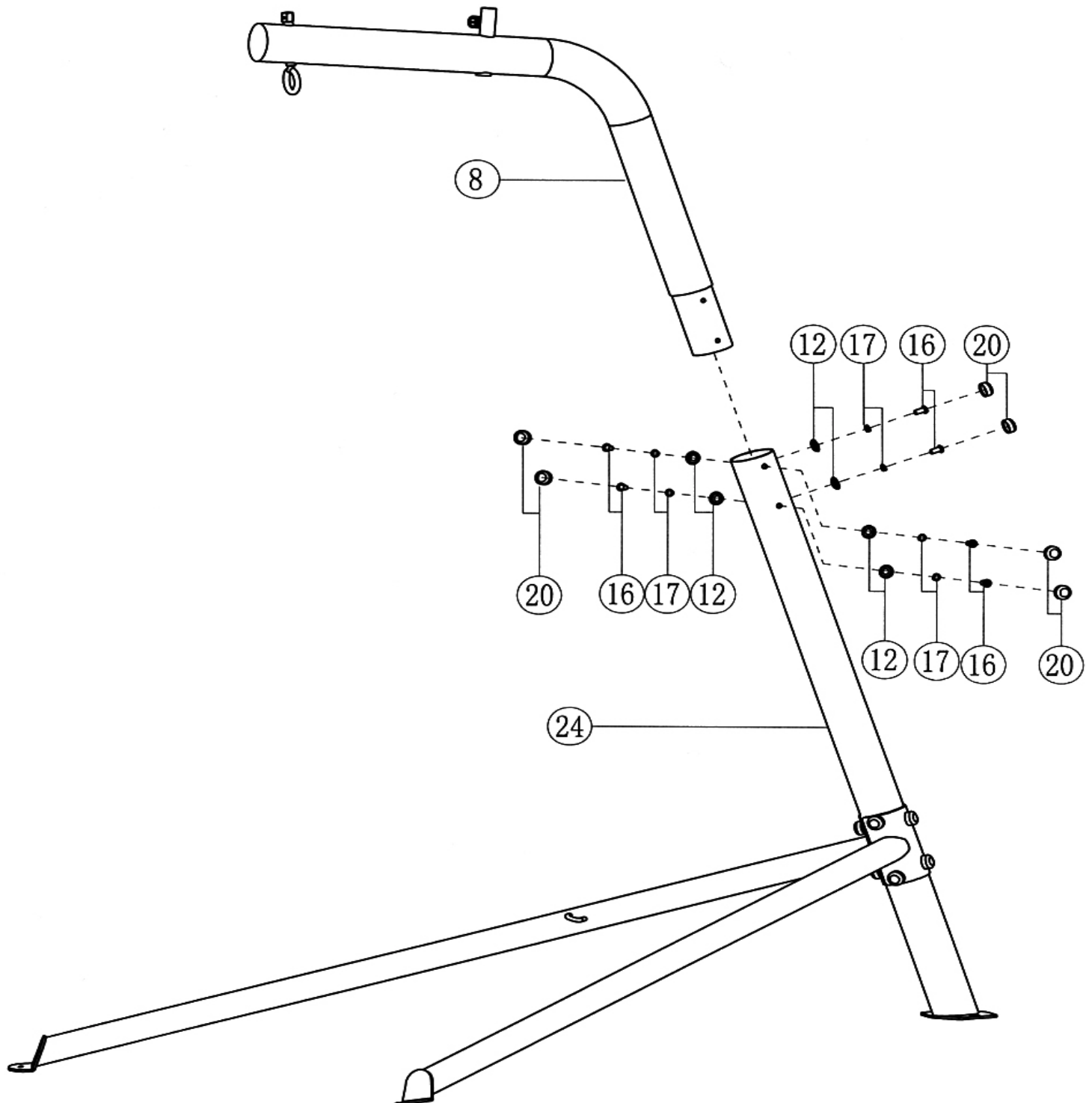
When installed the Ø 1" Washer, make sure the lip of the washer faces outside, away from the frame. The groove inside the Plastic Cover should clip onto the lip of the Washer.



**Step 1-2 (See Diagram 1-2)**

- A.) Insert the Upper Frame (#8) into the opening on the Main Post (#24).
- B.) Securely tighten them together with six M10 x  $\frac{3}{4}$ " Allen Bolts (#16),  $\varnothing \frac{3}{4}$ " Lock Washers (#17), and  $\varnothing \frac{3}{4}$ " Washers (#12).
- C.) Cover all Bolts with six  $\varnothing 1 \frac{1}{8}$ " Cover Caps (#20).

**DIAGRAM 1-2**



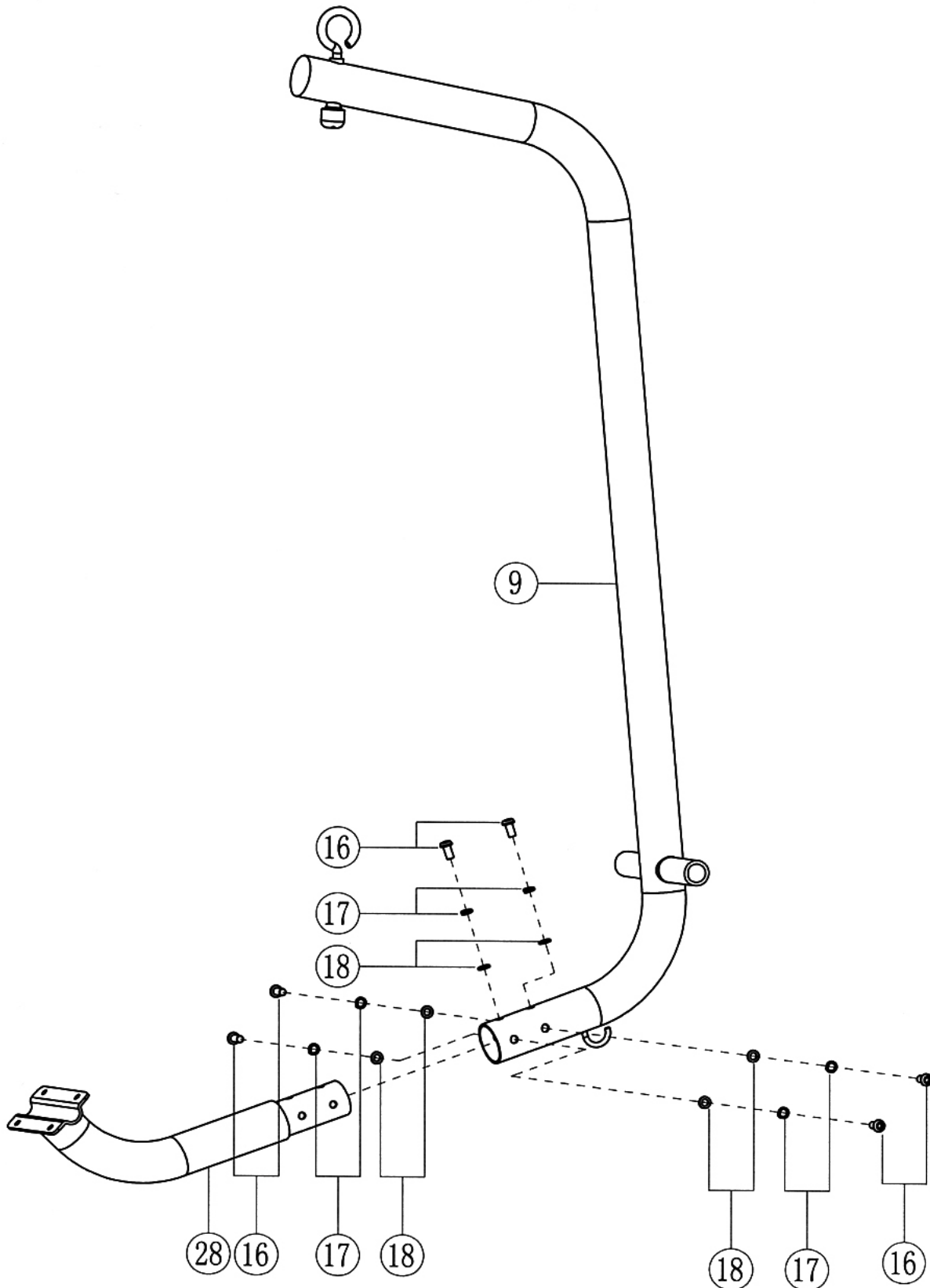


**Step 2-1 (See Diagram 2-1)**

A.) Insert the Lower Cantilever (#28) into the Upper Cantilever (#9).

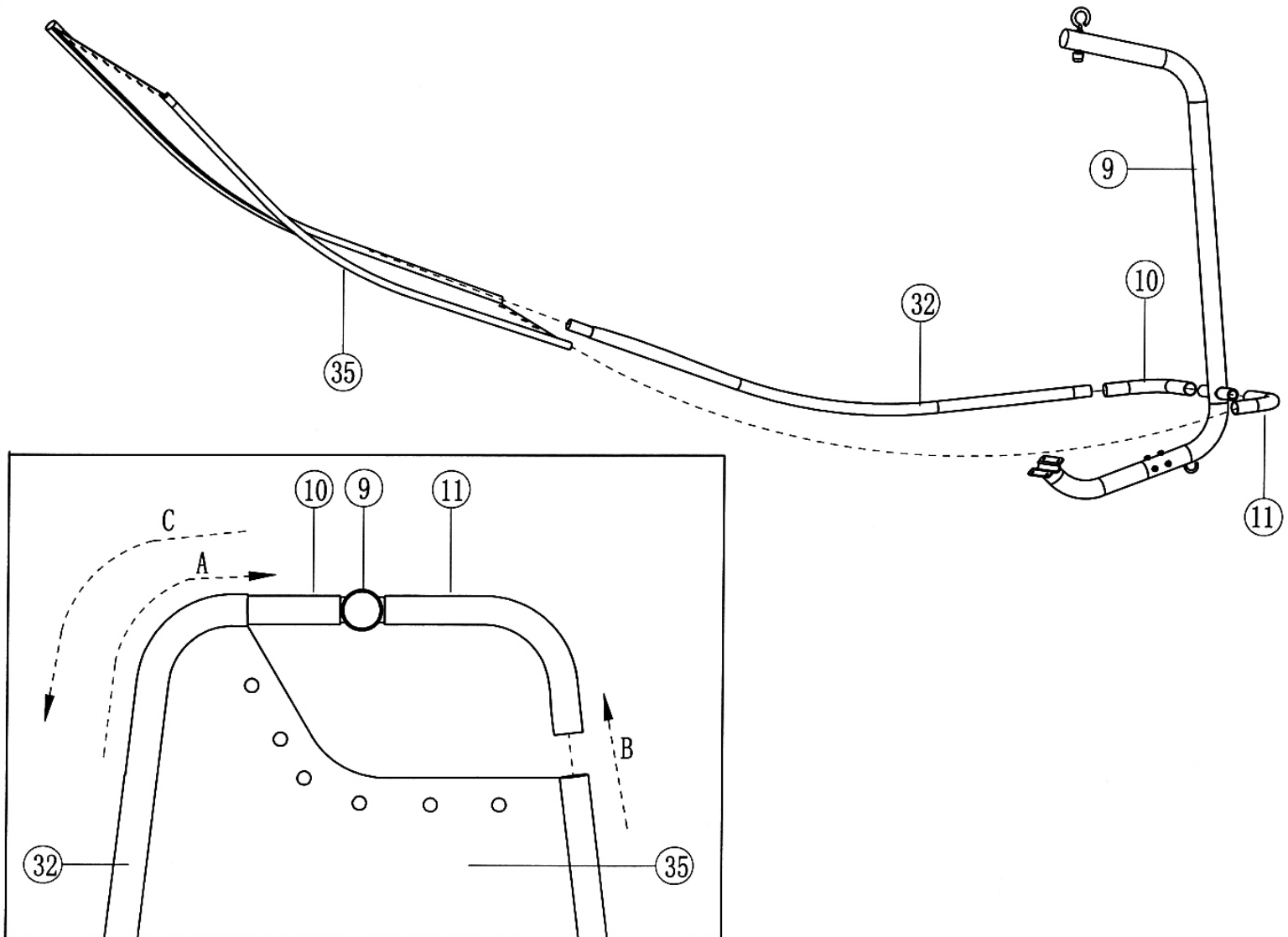
B.) Securely tighten them together with six M10 x  $\frac{3}{4}$ " Allen Bolts (#16),  $\varnothing \frac{3}{4}$ " Lock Washers (#17), and  $\varnothing \frac{3}{4}$ " Curved Washers (#18).

**DIAGRAM 2-1**



**Step 2-2 (See Diagram 2-2)**

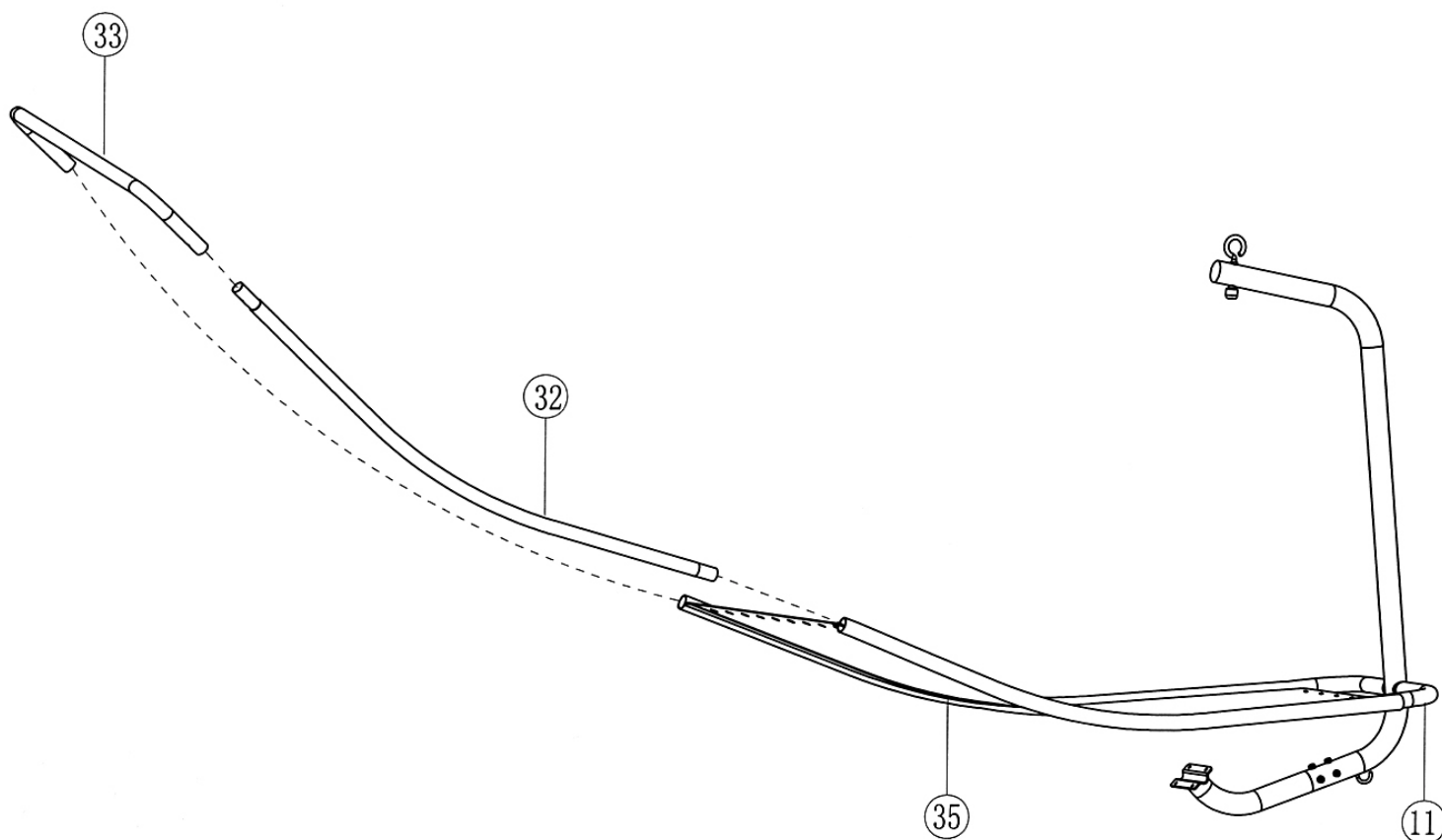
- A.) Attach the Right & Left Connecting Tube (#10 & #11) onto the Upper Cantilever (#9) from each side.
- B.) Insert one Lounge Chair Side Frame (#32) into the Right Connecting Tube (#10).
- C.) Slide the right sleeve on the Nylon Sheet (#35) onto the Lounge Chair Side Frame and all the way up to position A shown in the diagram.
- D.) Slide the left sleeve on the Nylon Sheet onto the Left Connect Tube (#11) to position B shown in the diagram.
- E.) Pull back the right sleeve on the Nylon Sheet to position C shown in diagram. Make sure the rivet holes on the Nylon Sheet are parallel to the Right & Left Connecting Tubes.

**DIAGRAM 2-2**

### Step 2-3 (See Diagram 2-3)

- A.) Insert the other Lounge Chair Side Frame (#32) through the left sleeve on the Nylon Sheet (#35) all the way into the Left Connect Tube (#11).
- B.) Insert the Lounge Chair End Frame (#33) into the two Lounge Chair Side Frames (#32).

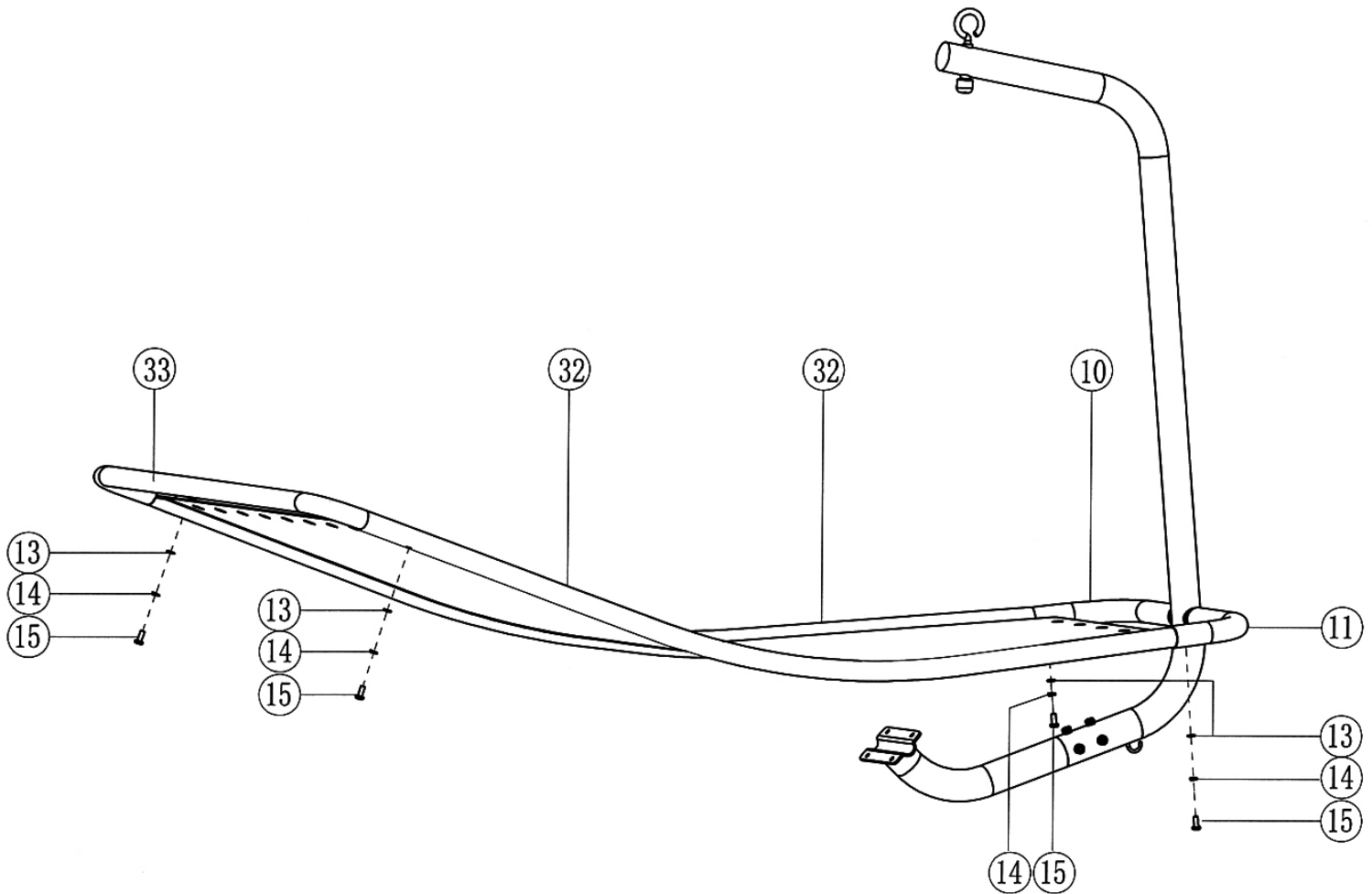
**DIAGRAM 2-3**



### Step 2-4 (See Diagram 2-4)

- A.) Secure the Lounge Chair Side Frames (#32) to the Connecting Tubes (#10 and 11) with two M8 x  $\frac{3}{4}$ " Allen Bolts (#15),  $\varnothing$  5/8" Lock Washers (#14), and  $\varnothing$  5/8" Curved Washers (#13).
- B.) Secure the Lounge Chair End Frame (#33) to the two Lounge Chair Side Frames with two M8 x  $\frac{3}{4}$ " Allen Bolts (#15),  $\varnothing$  5/8" Lock Washers (#14), and  $\varnothing$  5/8" Curved Washers (#13).

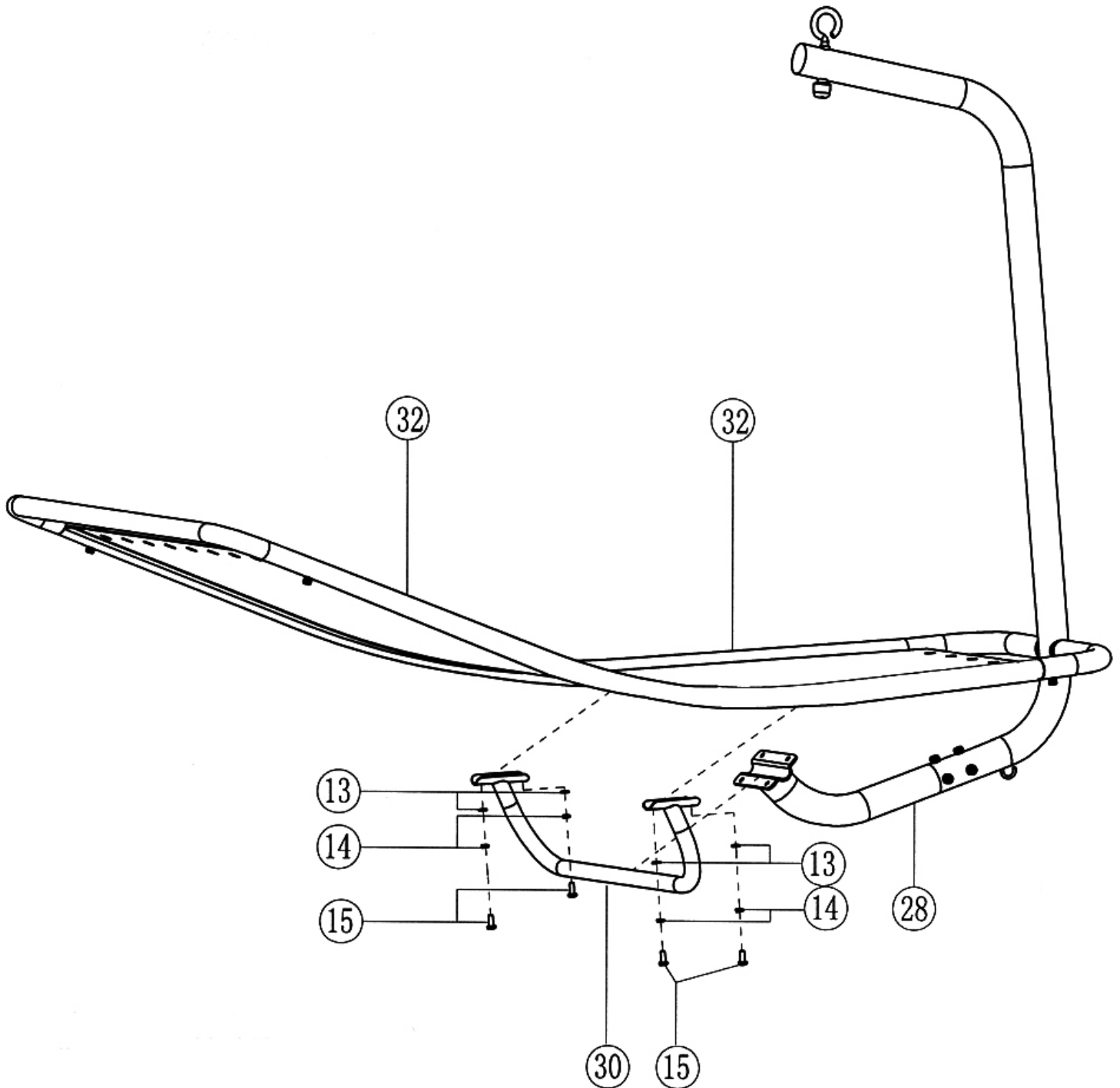
**DIAGRAM 2-4**



**Step 2-5 (See Diagram 2-5)**

- A.) Attach the Lounge Chair Support (#30) to the two Lounge Chair Side Frames (#32).  
B.) Secure it with four M8 x ¾" Allen Bolts (#15), Ø 5/8" Lock Washers (#14), and Ø 5/8" Curved Washers (#13).

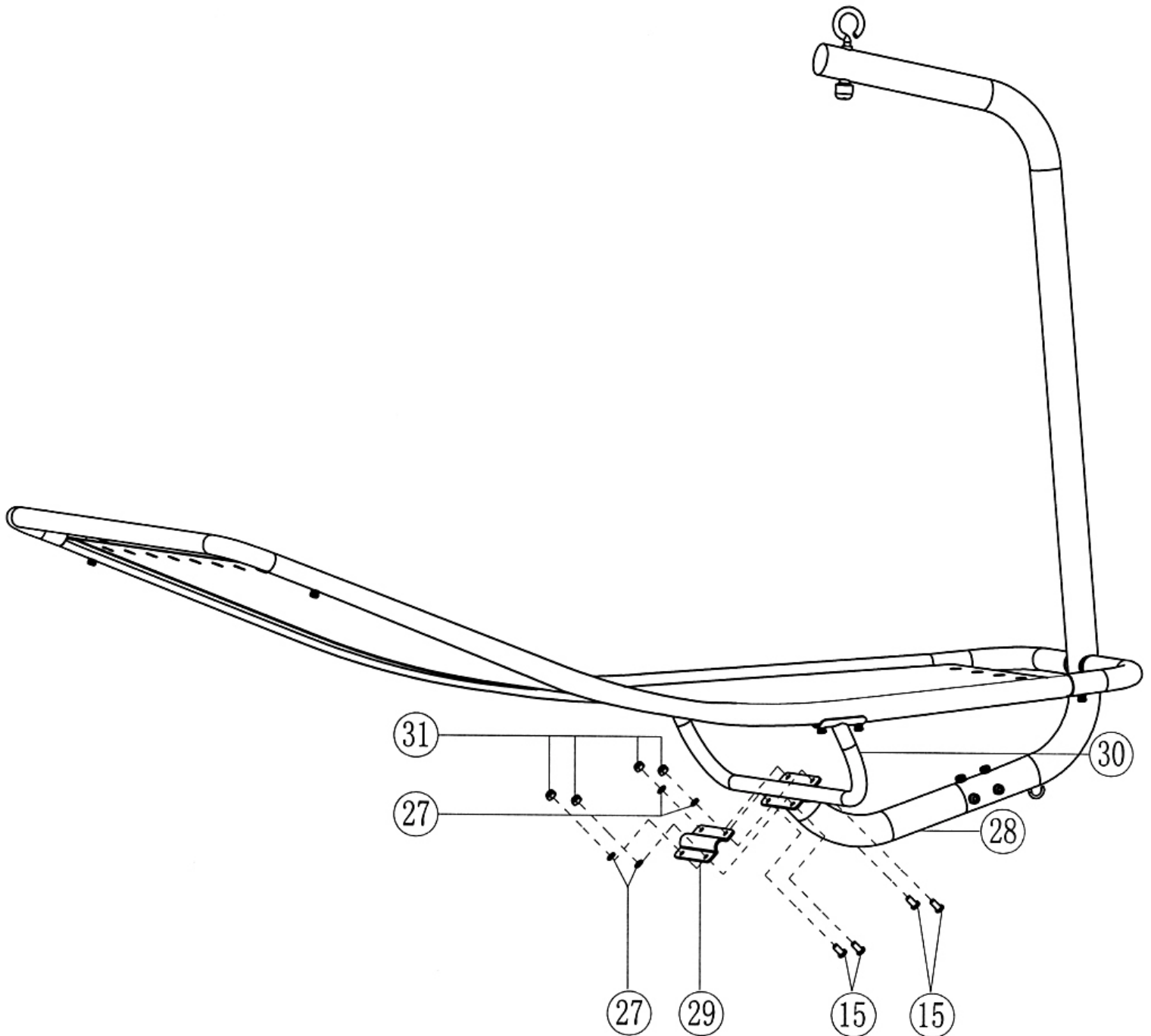
**DIAGRAM 2-5**



**Step 2-6 (See Diagram 2-6)**

- A.) Attach the Lounge Chair Support (#30) onto the bracket on the Lower Cantilever (#28).
- B.) Secure it with four M8 x  $\frac{3}{4}$ " Allen Bolts (#15), one Bracket (#29), four  $\varnothing$  5/8" Washers (#27), and four M8 Aircraft Nuts (#31).

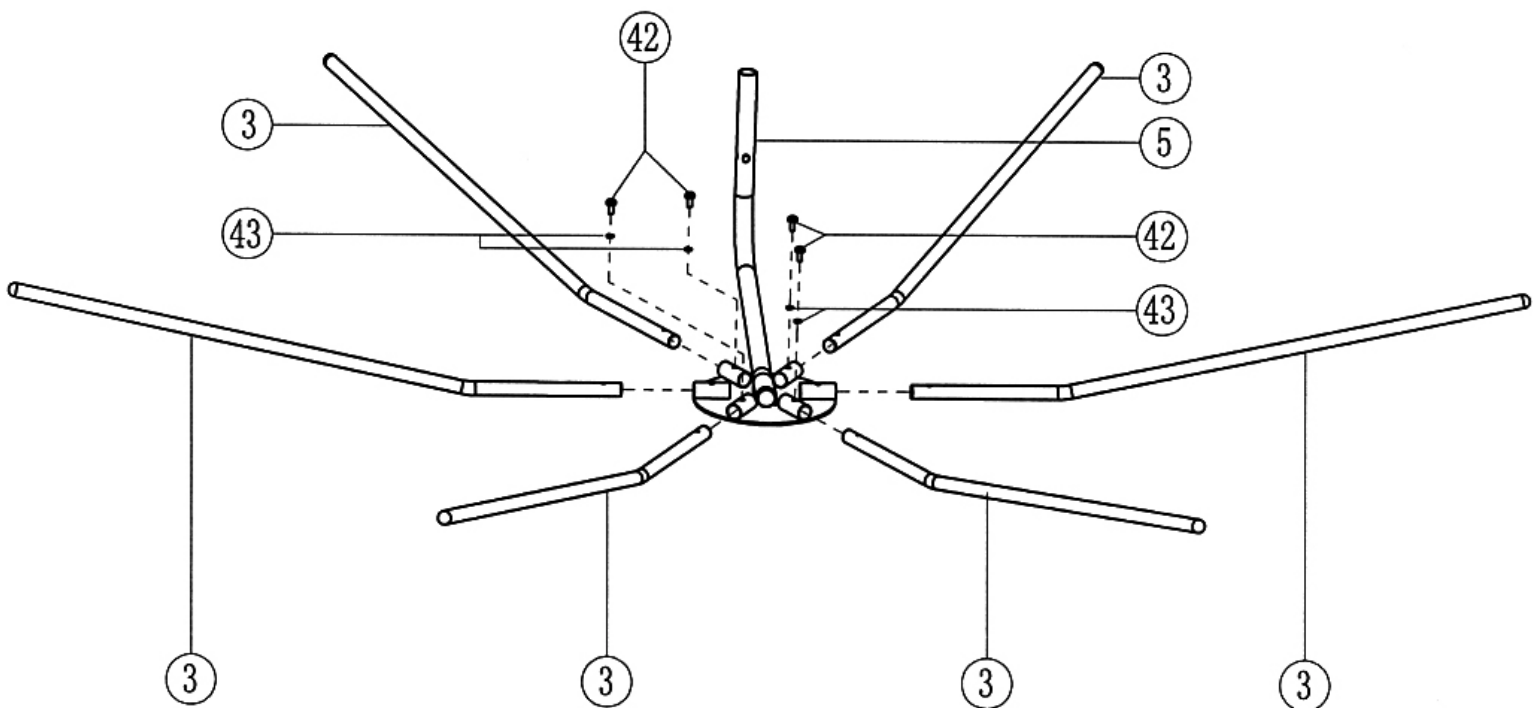
**DIAGRAM 2-6**



### Step 3-1 (See Diagram 3-1)

- A.) Insert four Support Tubes (#3) that are in diagonal direction to each other into the holes on the Canopy Support Frame (#5).
- B.) Secure each Support Tube with one M6 x ½" Allen Bolt (#42) and Ø ½" Lock Washer (#43).
- C.) Insert the other two Tubes into the Canopy Support Frame (#35) without tightening them.

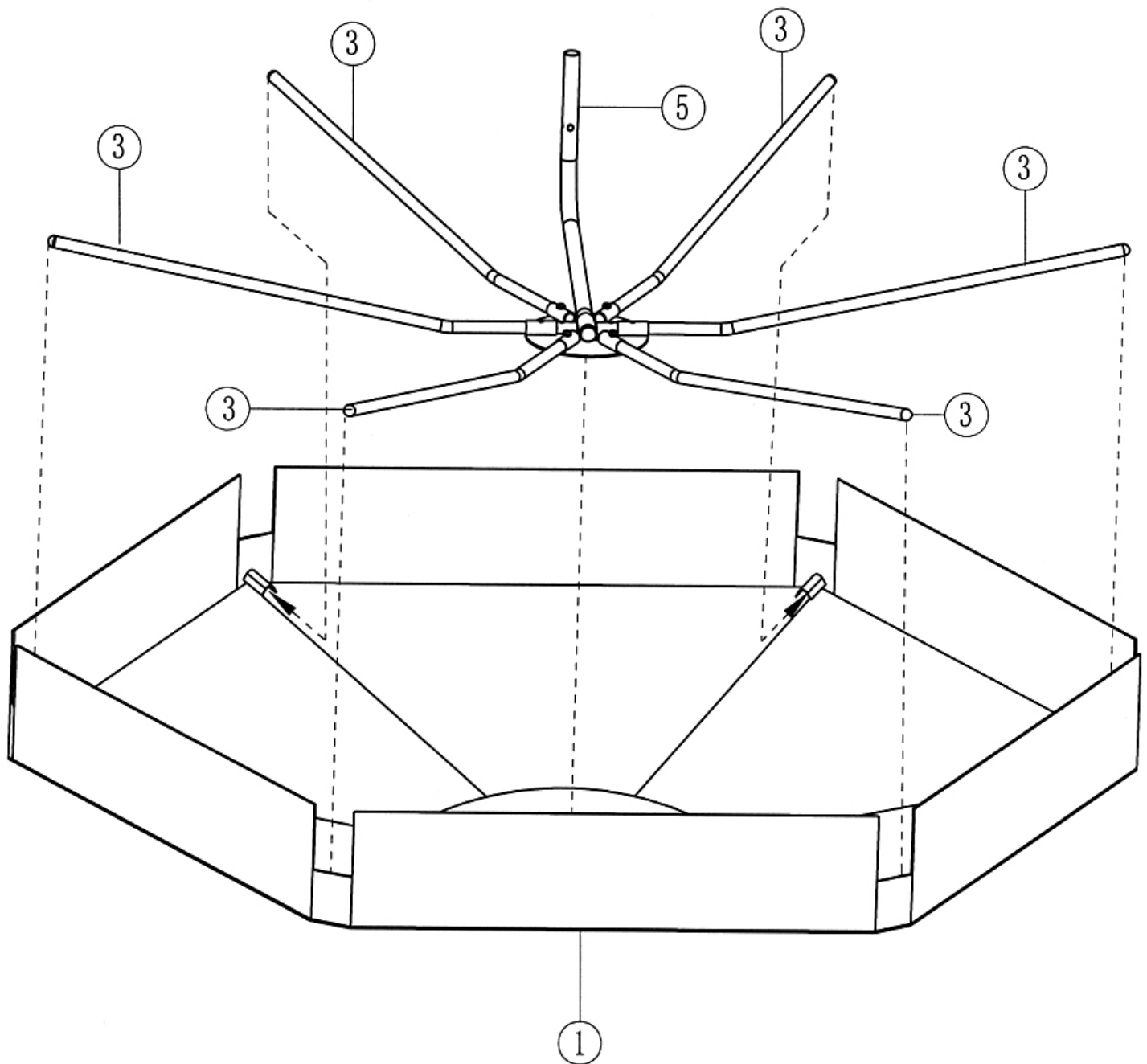
**DIAGRAM 3-1**



**Step 3-2 (See Diagram 3-2)**

A.) Insert the end of the Tubes (#3) into the pockets on the Canopy (#1).

**DIAGRAM 3-2**

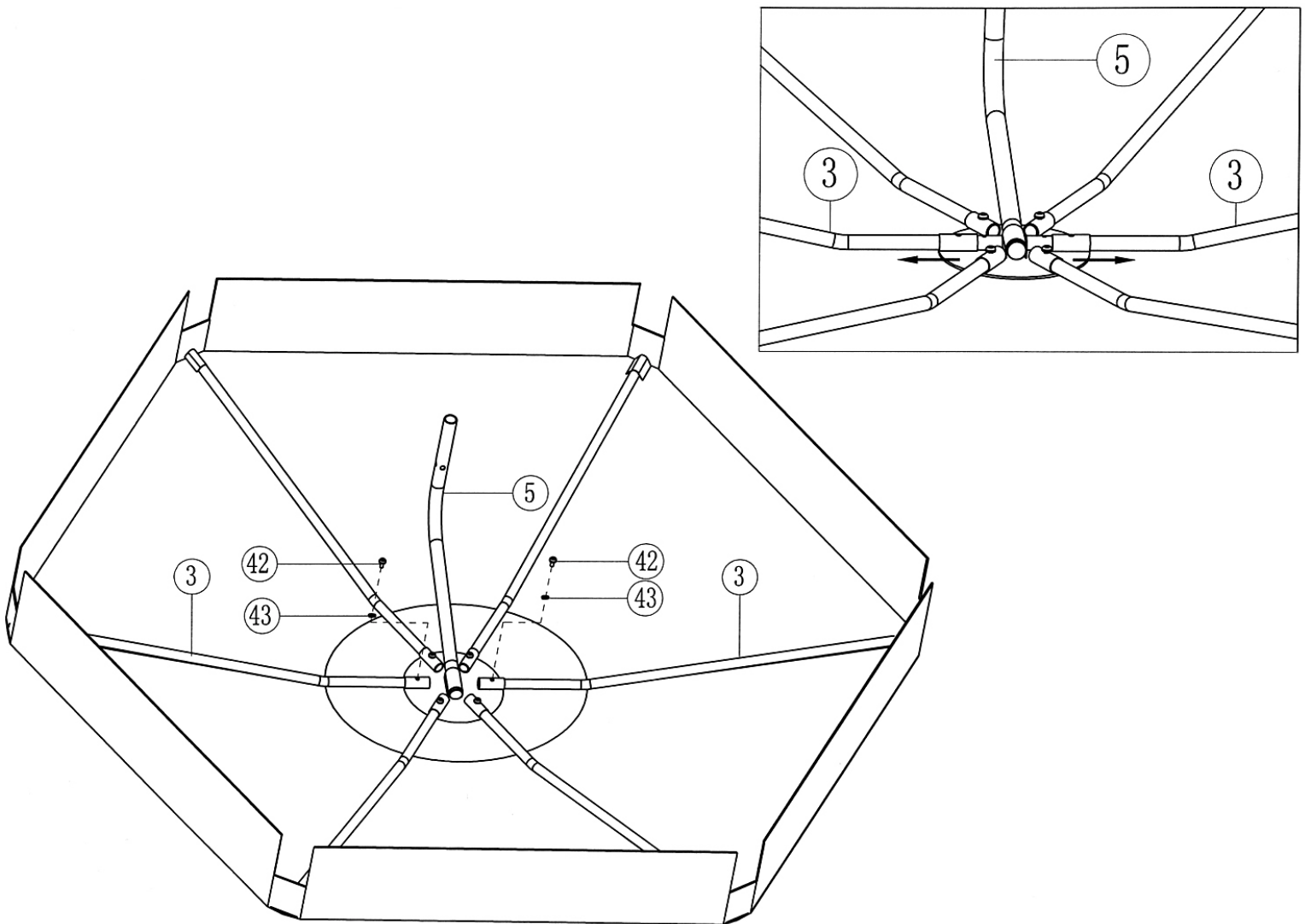




### Step 3-3 (See Diagram 3-3)

- A.) Push out the two Support Tubes (#3) that were not tightened in step 3-2 above, away from the center.
- B.) Secure each Support Tube to the Canopy Support Frame with one M6 x ½" Allen Bolt (#42) and Ø ½" Lock Washer (#43).

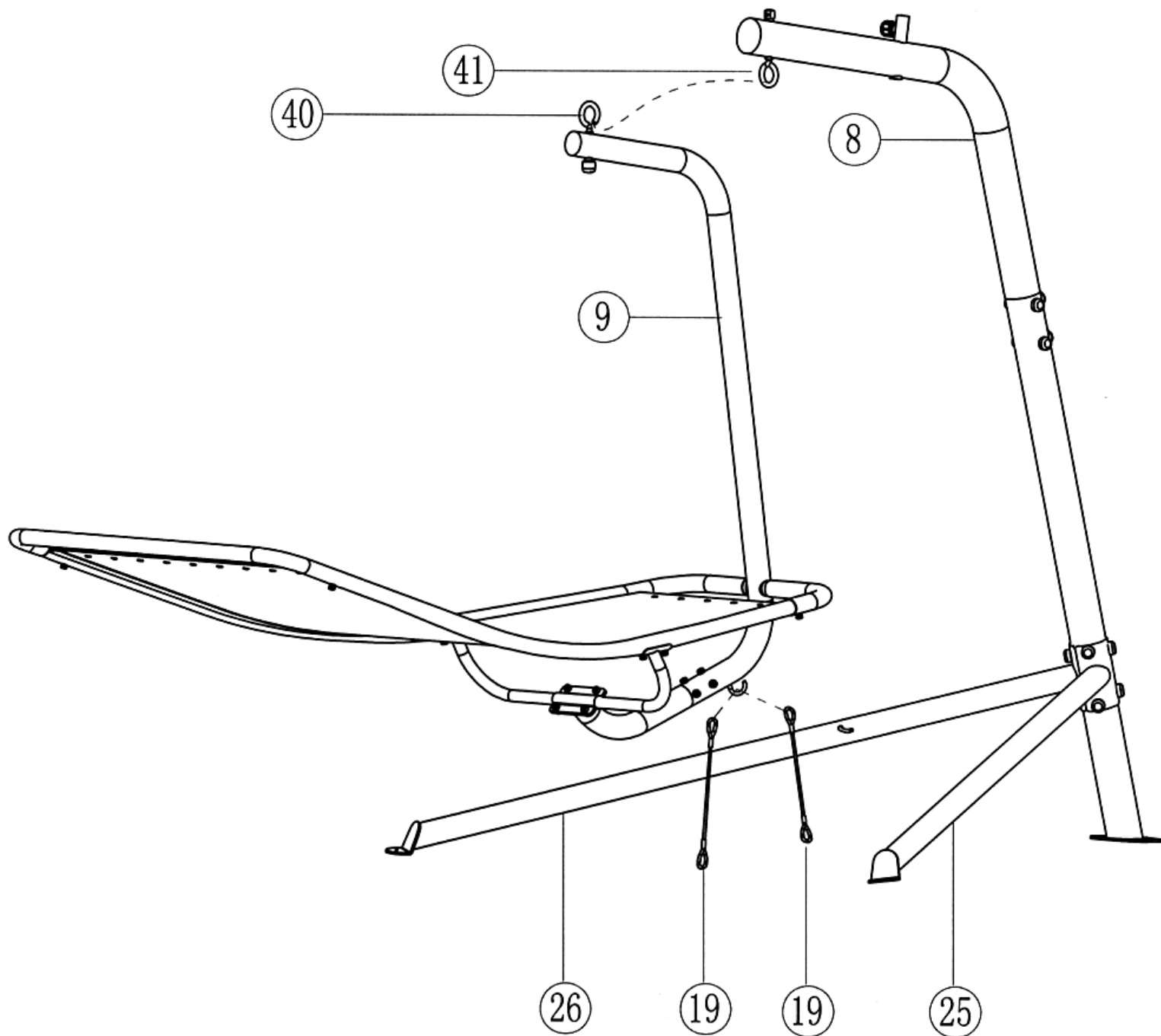
**DIAGRAM 3-3**



**Step 4-1 (See Diagram 4-1)**

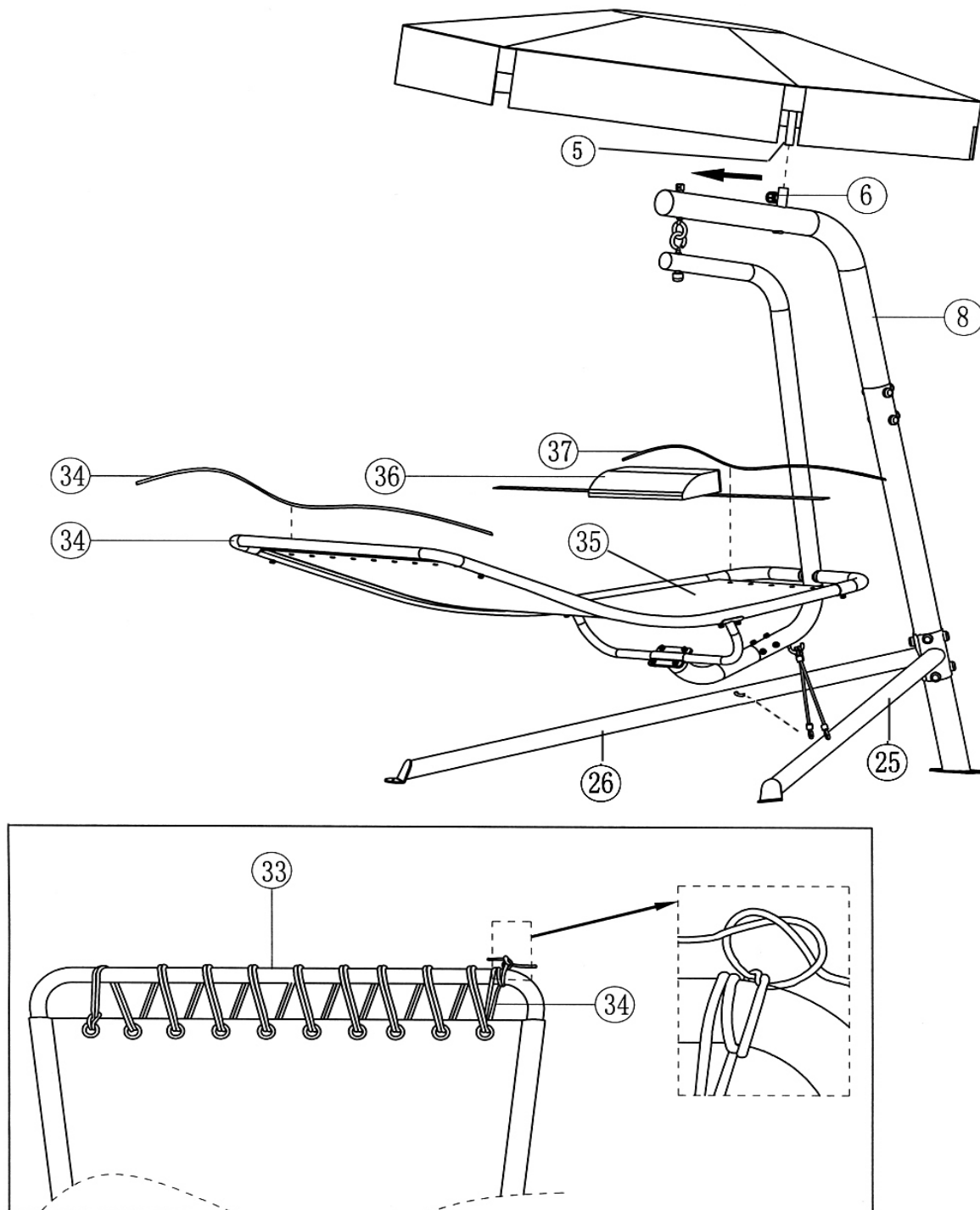
- A.) Hang the Cantilever Hook (#40) onto the Upper Frame Hook (#41).  
B.) Attach two Cables (#19) to the hook underneath the Upper Cantilever (#9).

**DIAGRAM 4-1**



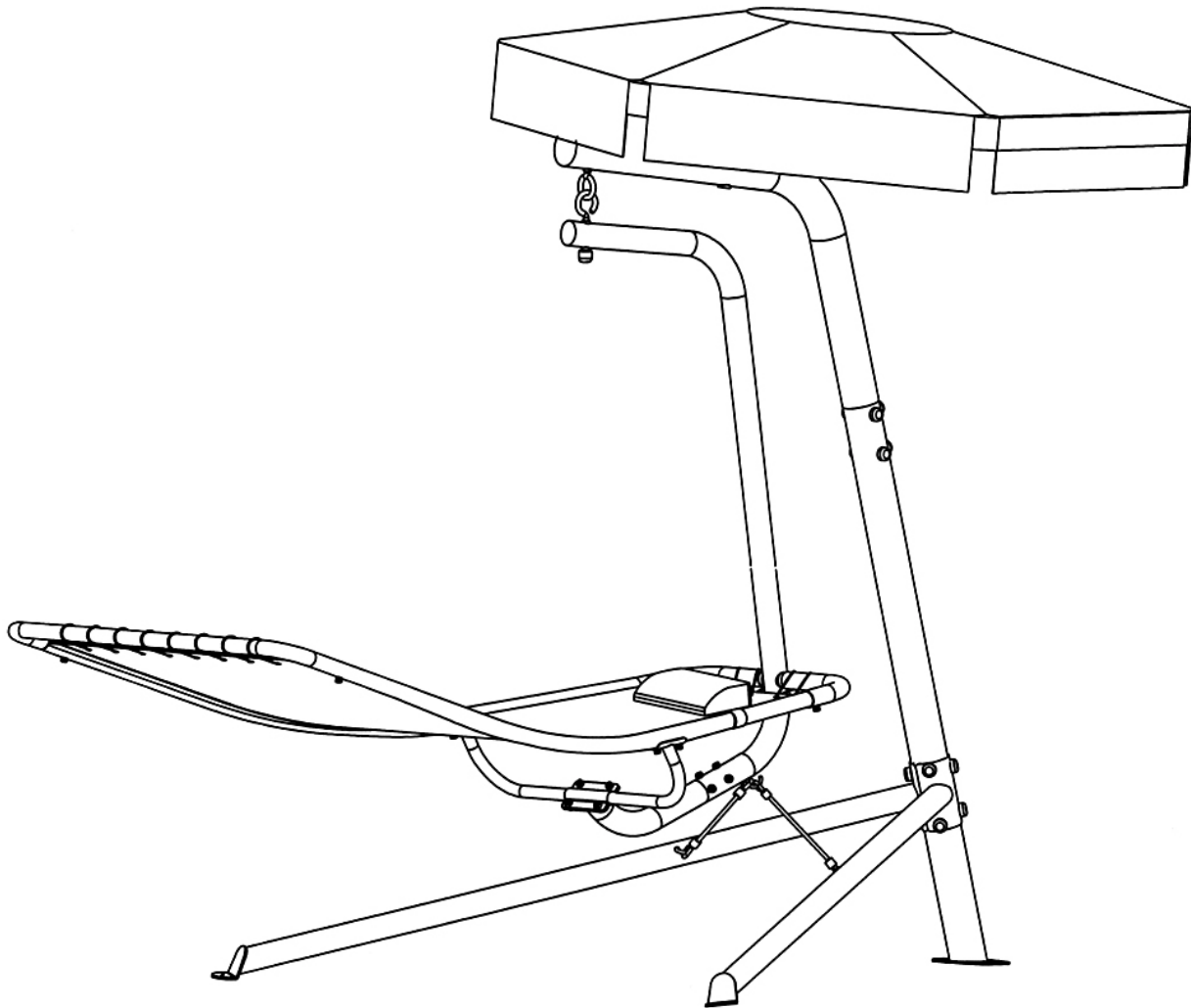
**Step 4-2 (See Diagram 4-2)**

- A.) Use the Nylon Sheet String (#34) to secure the Nylon Sheet to the Lounge Chair End Frame (#33). Use the String (#37) to secure the Sheet to the Connecting Tubes.
- B.) Place the Pillow (#36) onto the Nylon Sheet. Secure it with the Velcro strap.
- C.) Insert the tube on the Canopy Support Frame (#5) into the pivot on the Upper Frame (#8). Secure it with a Lock Knob (#6).
- D.) To adjust the Canopy position, loosen and pull the Lock Knob. Then turn the Canopy Support Frame to obtain the desired position.
- E.) Attach the other end of the two Cables (#19) to the hooks on the Left & Right Main Post Support (#25 & #26) to lock the Lounge Chair when not in use.

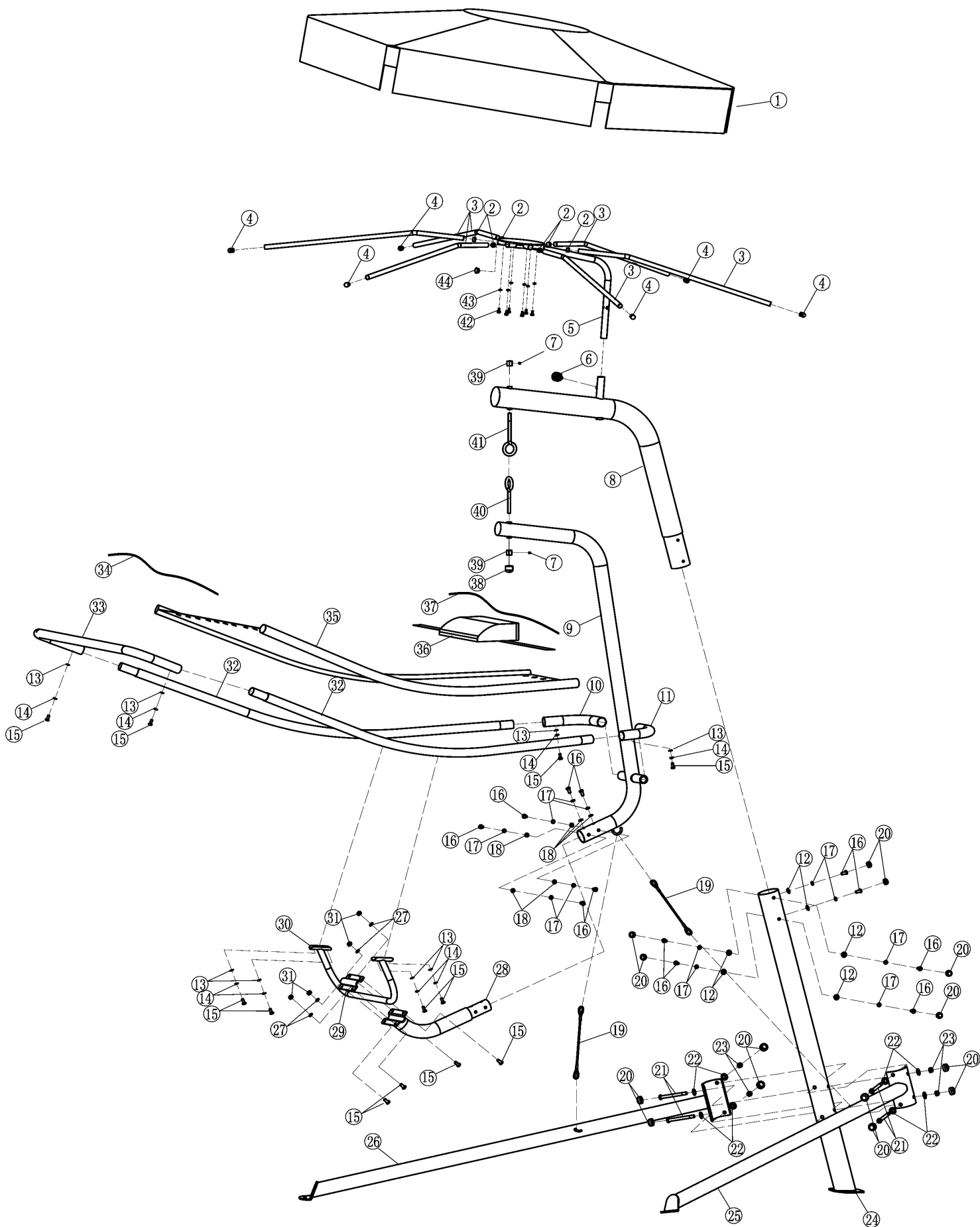
**DIAGRAM 4-2**

## OPERATION

1. The chair can be used with or without the bottom cables attached. It is recommended to use the cables attached until you are familiar with the motion of the lounge chair.
2. Only sit on the bed from the mid section of the bed with both hands holding onto the bed frames. **DO NOT** sit on the edge or the end of the bed. That would cause the bed to tilt over and cause injury.
3. When you first sit on the bed, the bed will rock back and forth. That is normal. It takes a little time to get used to the motion.
4. Only lay on the bed with your head on the pillow.
5. The Canopy can be swing away by simply turn and pull the Knob on the pivot.



# EXPLODED DIAGRAM



## Parts list

KEY NO.	DESCRIPTION	Q'ty
1	Canopy	1
2	Support Tube End Cap	6
3	Support Tube	6
4	Cone-shaped Canopy Support End Cap	6
5	Canopy Support Frame	1
6	Lock Knob	1
7	M6 Allen Screw	2
8	Upper Frame	1
9	Upper Cantilever	1
10	Right Connecting Tube	1
11	Left Connecting Tube	1
12	Ø ¾" Washer	6
13	Ø 5/8" Curved Washer	8
14	Ø 5/8" Lock Washer	8
15	M8 x ¾" Allen Bolt	12
16	M10 x ¾" Allen Bolt	12
17	Ø ¾" Lock Washer	12
18	Ø ¾" Curved Washer	6
19	Cable	2
20	Ø 1 1/8" Cover Cap	14
21	M12 x 4 ½" Allen Bolt	4
22	Ø 1" Washer	8
23	M12 Aircraft Nut	4
24	Main Post	1
25	Left Main Post Support	1
26	Right Main Post Support	1
27	Ø 5/8" Washer	4
28	Lower Cantilever	1
29	Bracket	1
30	Lounge Chair Support	1
31	M8 Aircraft Nut	4
32	Lounge Chair Side Frame	2
33	Lounge Chair End Frame	1
34	Nylon Sheet String	1
35	Nylon Sheet	1
36	Pillow	1
37	Pillow String	1
38	Ø 1" Hook End Cap	1
39	M12 Hook Lock Nut	2
40	Cantilever Hook	1
41	Upper Frame Hook	1
42	M6 x ½" Allen Bolt	6
43	Ø ½" Lock Washer	6
44	Ø 1" End Cap	1

# **IMPEX<sup>®</sup> INC.**

## **LIMITED WARRANTY**

IMPEX INC ("IMPEX<sup>®</sup>") warrants this product to be free from defects in workmanship and material, under normal use and service conditions, for a period of 2 YEARS from the date of purchase. This warranty extends only to the original purchaser. IMPEX's obligation under this Warranty is limited to replacing or repairing, at IMPEX's option.

All returns must be pre-authorized by IMPEX. Pre-authorization may be obtained by calling IMPEX Customer Service Department at 1-800-999-8899. All freights on products returned to IMPEX must be prepaid by the customer. This warranty does not extend to any product or damage to a product caused by or attributable to freight damage, abuse, misuse, improper or abnormal usage or repairs not provided by an IMPEX authorized service center or for products used for heavy commercial or rental purposes. No other warranty beyond that specifically set forth above is authorized by IMPEX.

IMPEX is not responsible or liable for indirect, special or consequential damages arising out of or in connection with the use or performance of the product or other damages with respect to any economic loss, loss of property, loss of revenues or profits, loss of enjoyments or use, costs of removal, installation or other consequential damages or whatsoever natures. Some states do not allow the exclusion or limitation of incidental or consequential damages. Accordingly, the above limitation may not apply to you.

The warranty extended hereunder is in lieu of any and all other warranties and any implied warranties of merchantability or fitness for a particular purpose is limited in its scope and duration to the terms set forth herein. Some states do not allow limitations on how long an implied warranty lasts. Accordingly, the above limitation may not apply to you.

This warranty gives you specific legal right. You may also have other rights which vary from state to state. Register on-line at [www.impex-fitness.com](http://www.impex-fitness.com)

**IMPEX<sup>®</sup> INC.**  
**14777 Don Julian Rd.,**  
**City of Industry, CA 91746**

### **ORDERING REPLACEMENT PARTS**

Replacement parts can be ordered by calling our Customer Service Department toll-free at **1-800-999-8899** during our regular business hours: Monday through Friday, 9 am until 5 pm Pacific standard time.

**[info@impex-fitness.com](mailto:info@impex-fitness.com)**

When ordering replacement parts, always give the following information.

1. Model
2. Description of Part
3. Part Number
4. Date of Purchase