

NOTE:
Please read all instructions
carefully before using this
product

Table of Contents

Safety Notice

Hardware Pack

Assembly Instruction

Parts List

Operation Tips

Warranty

Ordering Parts

Model
TT-320

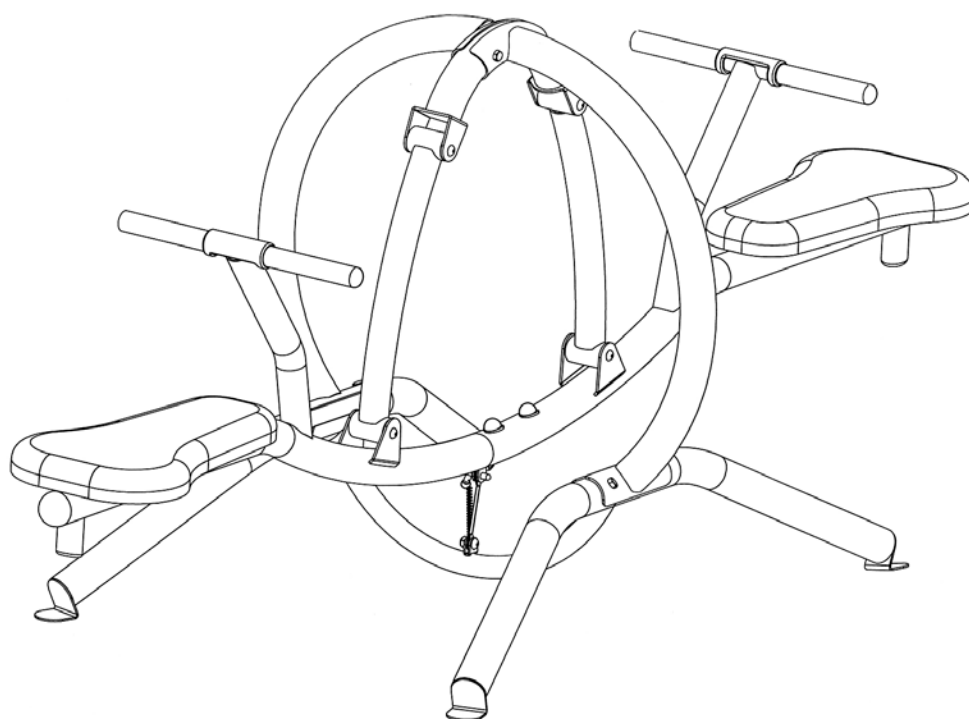
Retain This
Manual for
Reference

120615

OWNER'S
MANUAL

Gym Dandy®

TEETER TOTTER TT-320



IMPEX® INC.

14777 DON JULIAN RD., CITY OF INDUSTRY, CA 91746

Tel: (800) 999-8899 Fax: (626) 961-9966

www.impex-fitness.com

info@impex-fitness.com

TABLE OF CONTENTS

BEFORE YOU BEGIN..... 1

IMPORTANT SAFETY NOTICE..... 3

HARDWARE PACK..... 5

ASSEMBLY INSTRUCTIONS..... 6

EXPLODED DIAGRAM..... 11

PARTS LIST..... 12

OPERATION TIPS..... 13

WARRANTY..... 14

ORDERING PARTS..... 14

This item conforms to ASTM F1148, Consumer Safety Performance Specification for Home Playground Equipment.

BEFORE YOU BEGIN

Thank you for selecting the Gym Dandy Teeter Totter TT-320 by IMPEX® FITNESS PRODUCTS. For your safety and benefit, read this manual carefully before using the machine. As a manufacturer, we are committed to provide you complete customer satisfaction. If you have any questions, or find there are missing or damaged parts, we guarantee you complete satisfaction through direct assistance from our factory. DO NOT RETURN THE UNIT TO THE STORE! To avoid unnecessary delays, please call our *TOLL-FREE customer service number*. Our Customer Service Agents will provide immediate assistance to you.

Toll-Free Customer Service Number

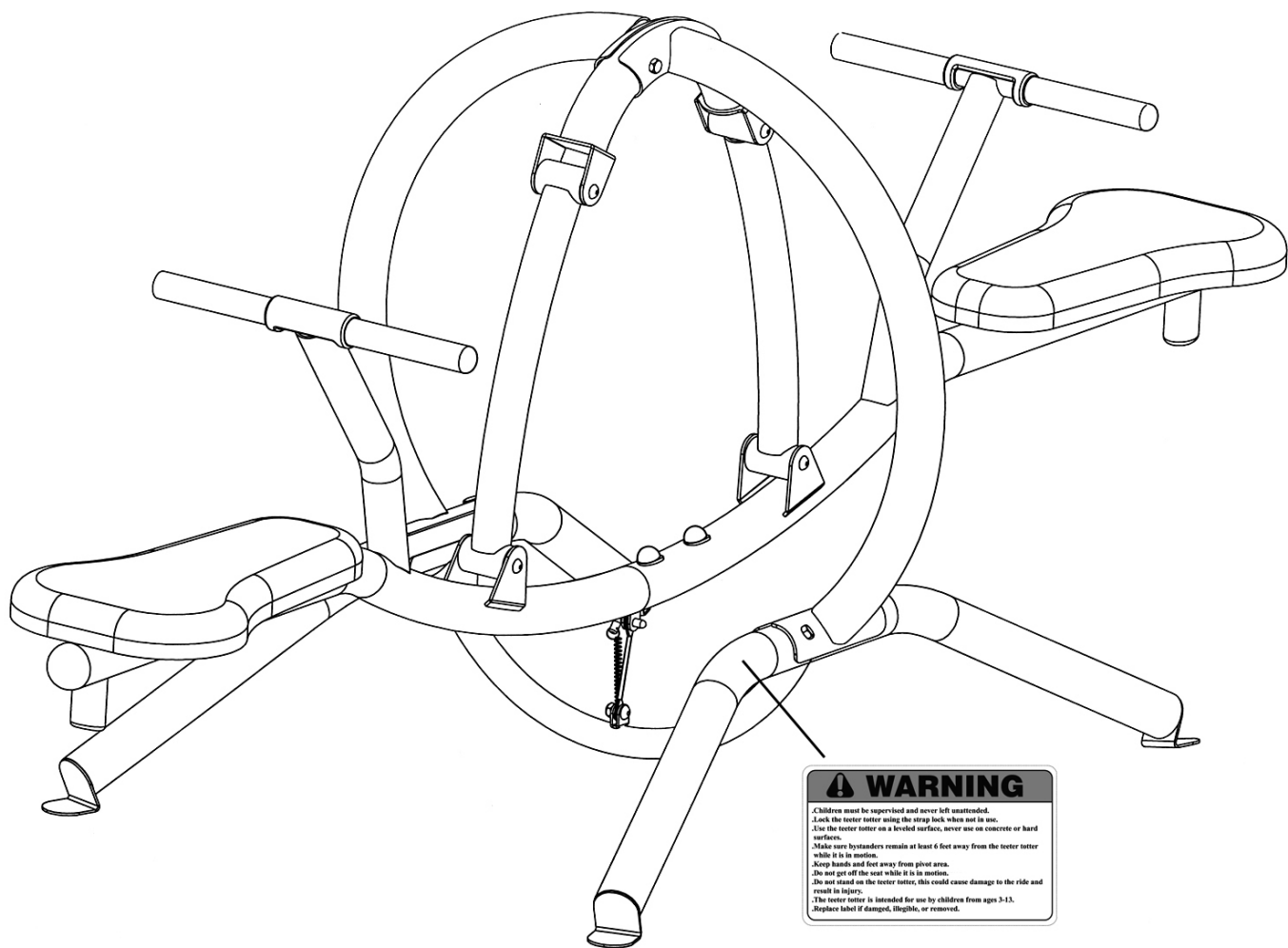
1-800-999-8899

Mon. – Fri. 9 a.m. – 5 p.m. PST

www.impex-fitness.com

info@impex-fitness.com

WARNING LABEL PLACEMENT



The Warning Label shown here has been placed on the Base Stabilizer. If the label is missing or illegible, please call customer service at 1-800-999-8899 for replacement. Apply the label in location shown.

IMPORTANT SAFETY NOTICE

This play ground equipment is built for optimum safety. However, certain precautions apply whenever you operate a piece of play ground equipment. Be sure to read the entire manual before you assemble or operate your equipment. In particular, note the following safety precautions to reduce the likelihood of serious or fatal injury.

1. Children must be supervised at all times and never left unattended with the unit.
2. Do not install the equipment over concrete, asphalt, packed earth, grass, carpet or any other hard surface. A fall onto a hard surface can result in serious injury to the user.
3. Make sure the surfaces, either indoors or outdoors, are free of objects that may cause tipping over.
4. Place the equipment on level ground, not less than 6 ft (1.8 m) from any structure or obstruction such as fence, garage, house, overhanging branches, laundry lines, or electrical wires.
5. Lock the teeter-totter with the strap locks when not in use.
6. Make sure bystanders are at least 5 feet away from the equipment while it is in motion. No one should be allowed to walk close to, in front of, behind, or between moving items.
7. Keeps hands and feet away from the pivot area.
8. Do not get off from seat while it is in motion.
9. Do not stand on the teeter-totter. This could cause damage to the ride and result in injury.
10. Do not swing with empty seat.
11. Children should not wear loose clothing. Attire should include well-fitting shoes.
12. **This teeter totter is intended for use by children from ages 3 to 13.**
13. **Maximum weight capacity 400 lbs.**
14. This teeter totter is designed for **HOME USE ONLY**.
15. Only two persons should be using the equipment at the same time.
16. Impact-absorbing material must be placed around the teeter totter. Please refer to the PLAYGROUND SURFACING MATERIALS in page 4.
17. Maximum fall height: 52 inches.
18. To prevent serious injury, children must NOT use the equipment until properly installed.
19. To prevent serious injury, parents must make warnings to children not to use this equipment in a manner other than intended.
20. To prevent serious injury, parents must make warnings to children not to attach items to the equipment that are not specifically designed for use with the equipment.

Care and Maintenance

1. Periodically inspect all parts. Check all nuts and bolts twice monthly during the usage season for tightness and tighten as required. It is particularly important that this procedure be followed at the beginning of each season.
2. Replace any worn and damaged part immediately. Check all coverings for bolts and sharp edges twice monthly during usage season to be certain they are in place. Replace when necessary. It is especially important to do this at the beginning of each new season.
3. Cover the equipment with tarp when left outdoor.
4. Use mild household spray cleaners and/or a damp rag to wipe clean. Do not use harsh cleaning chemicals.
5. Sand rusted areas on tubular members and repaint using a non-lead based paint meeting the requirements of Title 16 CFR Part 1303.
6. Disposal Instructions – The equipment can be safely disassembled and disposed without unreasonable hazards. Call your local recycle agency regarding details of recycling.
7. Assembled dimension: 112" x 35" x 36" (LxWxH)

SAVE THESE INSTRUCTIONS.

CONSUMER INFORMATION SHEET FOR PLAYGROUND SURFACING MATERIALS

The U.S. Consumer Product Safety Commission (CPSC) estimates that about 100,000 playground equipment-related injuries resulting from falls to the ground surface are treated annually in U.S. hospital emergency rooms. Injuries involving this hazard pattern tend to be among the most serious of all playground injuries, and have the potential to be fatal, particularly when the injury is to the head. The surface under and around playground equipment can be a major factor in determining the injury-causing potential of a fall. It is self evident that a fall onto a shock absorbing surface is less likely to cause a serious injury than a fall onto a hard surface. Playground equipment should never be placed on hard surfaces such as concrete or asphalt and while grass may appear to be acceptable it may quickly turn to hard packed earth in areas of high traffic. Shredded bark mulch, wood chips, fine sand or fine gravel are considered to be acceptable shock absorbing surfaces when installed and maintained at a sufficient depth under and around playground equipment.

The following table lists the maximum height from which a child would not be expected to sustain a life-threatening head injury in a fall onto four different loose-fill surfacing materials if they are installed and maintained at depths of 6, 9, and 12 inches. However, it should be recognized that all injuries due to falls cannot be prevented no matter what surfacing material is used.

FALL HEIGHT IN FEET FROM WHICH A LIFE THREATENING HEAD INJURY WOULD NOT BE EXPECTED			
TYPE OF MATERIAL	6-INCH DEPTH	9-INCH DEPTH	12-INCH DEPTH
Double Shredded Bark Mulch	6	10	11
Wood Chips	6	7	12
Fine Sand	5	5	9
Fine Gravel	6	7	10

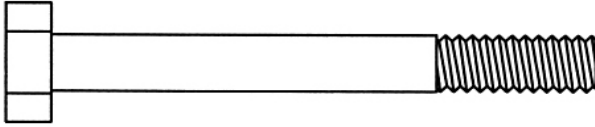
It is recommended that a shock absorbing material should extend a minimum of 6 feet in all directions from the perimeter of stationary equipment such as climbers and slides. However, because children may deliberately jump from a moving swing, the shock absorbing material should extend in the front and rear of a swing a minimum distance of 2 times the height of the pivot point measured from a point directly beneath the pivot on the supporting structure.

This information is intended to assist in comparing the relative shock-absorbing properties of various material. No particular material is recommended over another. However, every material is only effective when properly maintained. Materials should be checked periodically and replenished to maintain correct depth as determined necessary for your equipment. The choice of a material depends on the type and height of the playground equipment, the availability of the material in your area, and its cost.

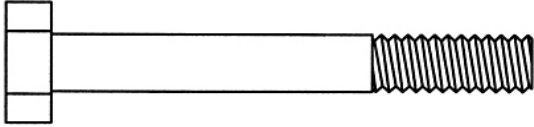
'This information has been extracted from the CPSC publications "Playground Surfacing - Technical Information Guide" and "Handbook for Public Playground Safety." Copies of these reports can be obtained by sending a postcard to the: Office of Public Affairs, U.S. Consumer Product Safety Commission, Washington, D.C., 20207 or call the toll-free hot line: 1-800-638-2772.

Please note there are 4 holes on the feet of the main frame. The purpose of these holes is to anchor the unit to the ground in the commercial or park environment. It is not necessary to anchor the unit to the ground if you are only using the unit for your home or backyard. When anchoring the unit, follow the instructions above to install the shock absorbing material around the unit to prevent injury. This selling unit does not come with the parts for anchoring.

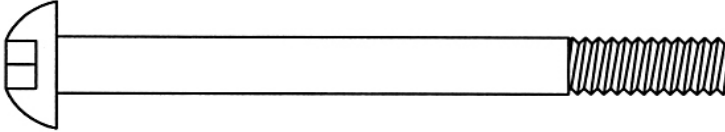
HARDWARE PACK



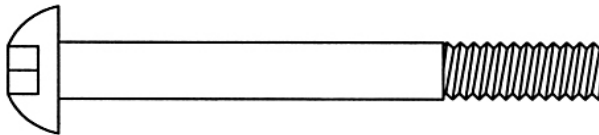
#20 M10 x 3 $\frac{3}{8}$ " Hex Bolt (Qty 6)



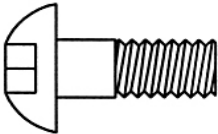
#21 M10 x 3" Hex Bolt (Qty 2)



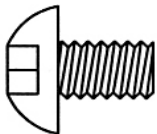
#24 M10 x 4 $\frac{1}{8}$ " Allen Bolt (Qty 2)



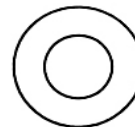
#25 M10 x 3 $\frac{3}{8}$ " Allen Bolt (Qty 2)



#22 M10 x 1" Allen Bolt (Qty 1)



#23 M10 x $\frac{5}{8}$ " Allen Bolt (Qty 8) #27 \varnothing $\frac{3}{4}$ " Washer (Qty 10)



#26 \varnothing $\frac{3}{4}$ " Bent Washer (Qty 18)



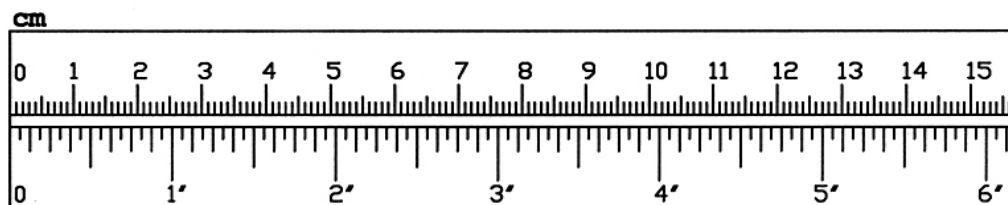
#29 \varnothing $\frac{3}{4}$ " Lock Washer (Qty 4)



#28 M10 Aircraft Nut (Qty 9)



#13 Bushing (Qty 8)



ASSEMBLY INSTRUCTION

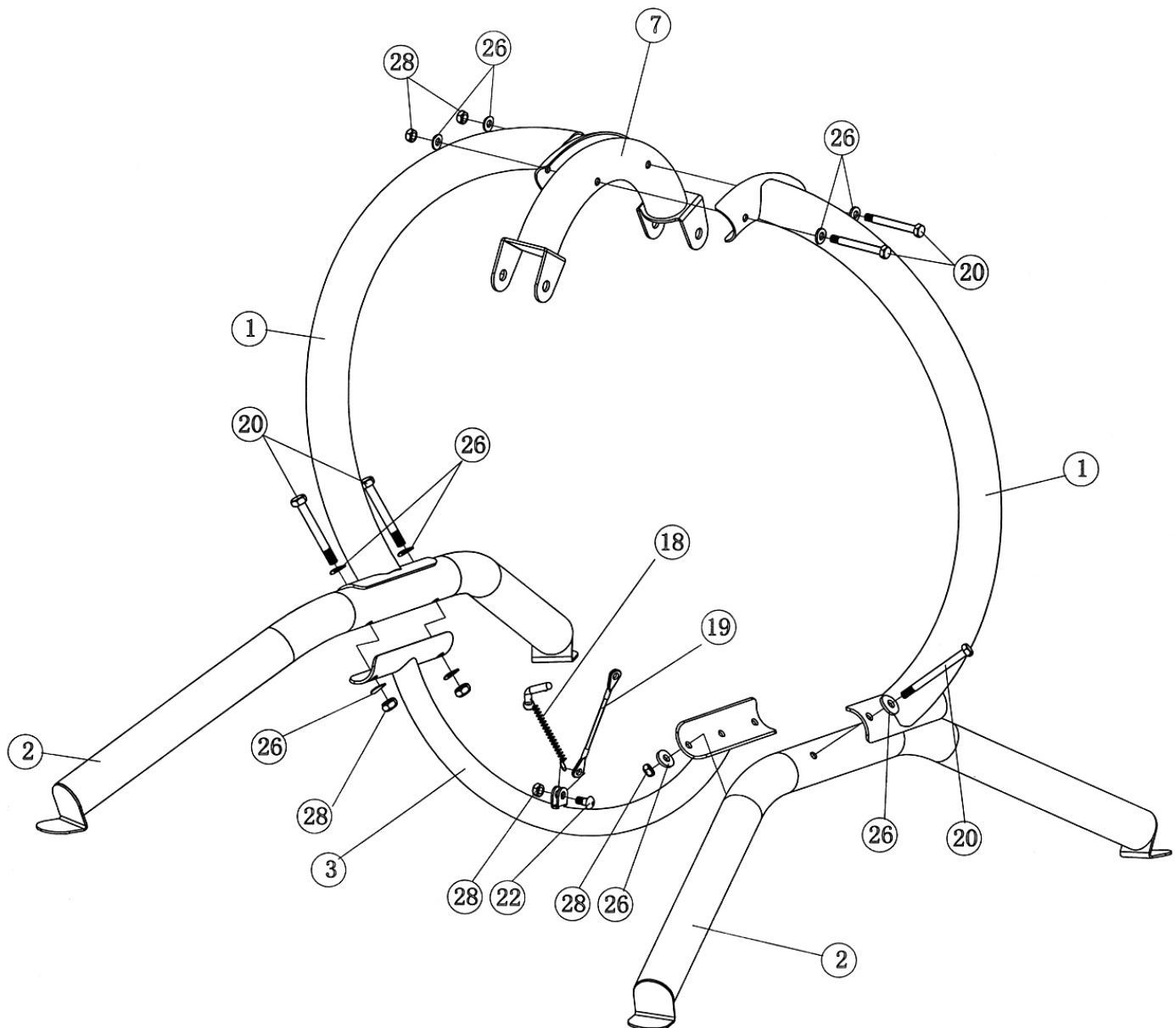
Tools Required Assembling the Machine: Two Adjustable Wrenches and Allen Wrench.

NOTE: It is strongly recommended two or more people assembling this machine to avoid possible injury.

Caution: Children must NOT use the equipment until it's properly installed.

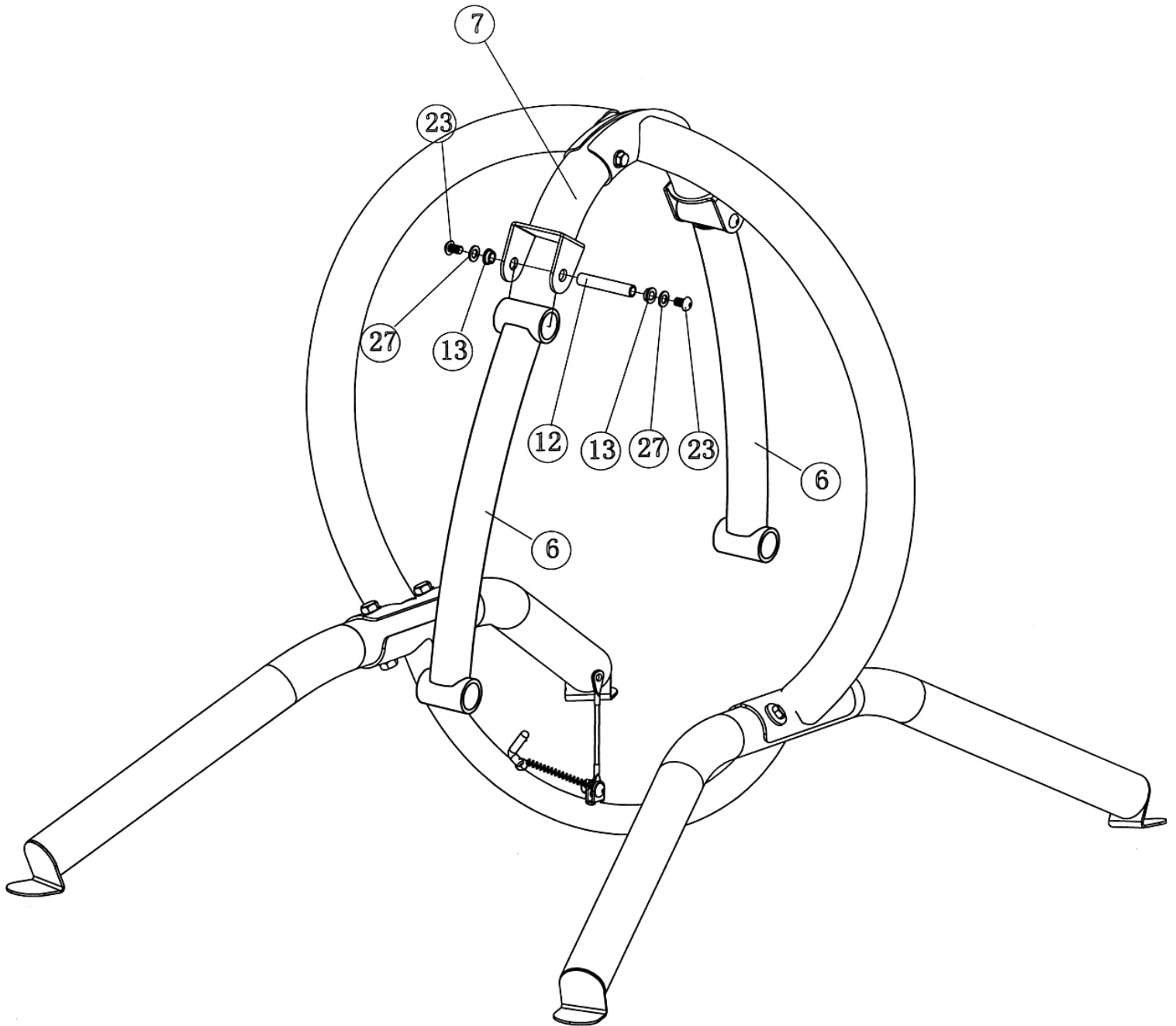
STEP 1 (See Diagram 1)

- A.) Place the two Base Stabilizers (#2) on a flat surface. Attach one end of a Main Frame (#1) to a Base Stabilizer from the top. Attach one end of Cross Brace (#3) to the Base Stabilizer from the bottom. Secure them together with two M10 x 3 3/8" Hex Bolts (#20), four Ø 3/4" Bent Washers (#26), and two M10 Aircraft Nuts (#28). Do not tighten the Nuts and Bolts yet.
- B.) Repeat the same procedure to install the other Main Frame to the other Base Stabilizer.
- C.) Place the Swing Base (#7) in between the two Main Frames (#1). Align the holes and secure them together with two M10 x 3 3/8" Hex Bolts (#20), four Ø 3/4" Bent Washers (#26), and two M10 Aircraft Nuts (#28).
- D.) Securely tighten all Nuts and Bolts.
- E.) Attach the Cable Strap (#19) and the ring on the L-shaped Lock Pin (#18) to the small bracket on the Cross Brace (#3). Secure them with one M10 x 1" Allen Bolt (#22) and M10 Aircraft Nut (#28).



STEP 2 (See Diagram 2)

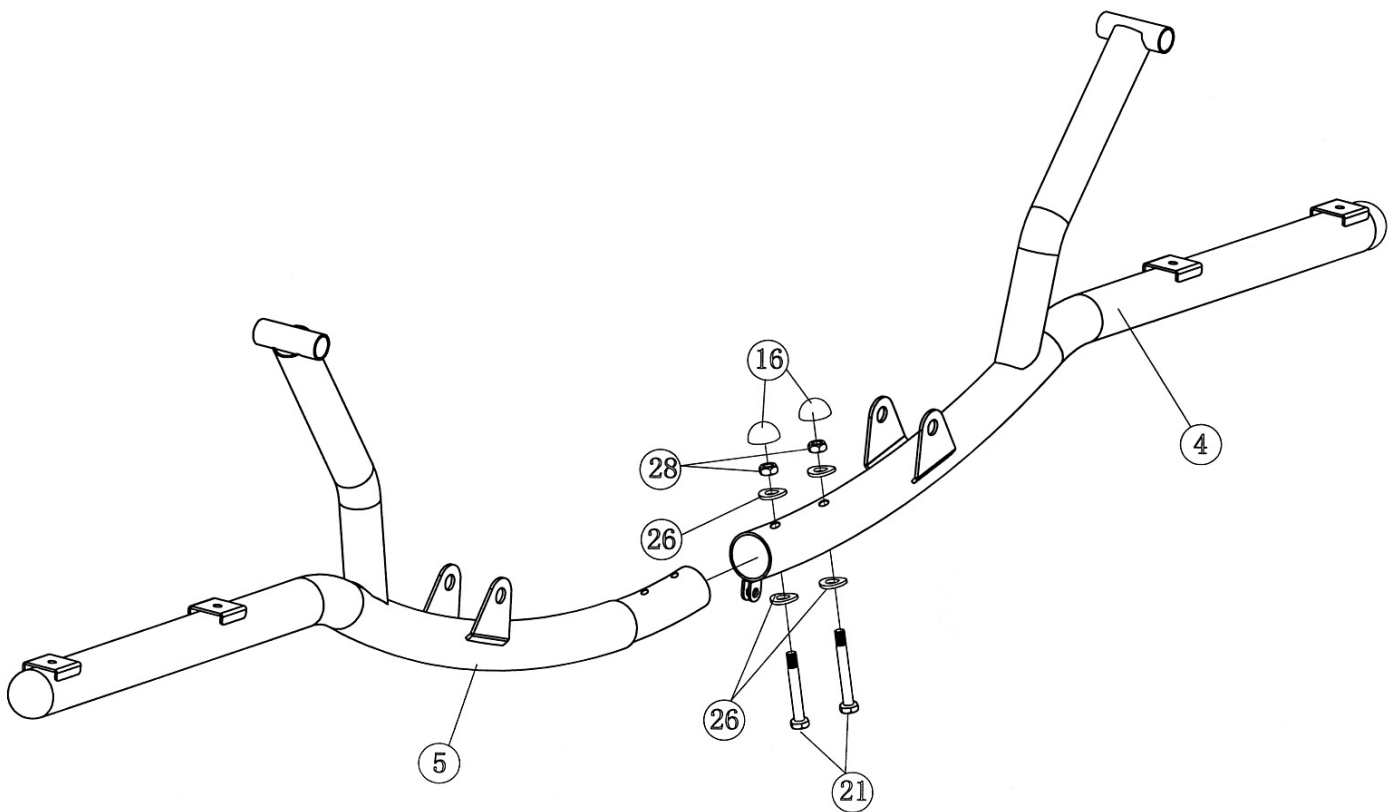
- A.) Attach the Pivot on a Swing Arm (#6) to the open bracket on the Swing Base (#7). Align the holes and insert an Axle (#12) through the holes. Secure each end of the Axle with one Bushing (#13), $\text{Ø } \frac{3}{4}$ " Washer (#27), and M10 x 5/8" Allen Bolt (#23).
- B.) Repeat the Procedure A above to install the other Swing Arm.

DIAGRAM 2

Step 3 (See Diagram 3)

- A.) Connect the Left Seat Support (#5) and the Right Seat Support (#4). Secure them together with two M10 x 3" Hex Bolts (#21), four Ø 3/4" Bent Washers (#26), and two M10 Aircraft Nuts (#28).
- B.) Cover the two Nuts with two Nut Covers (#16).

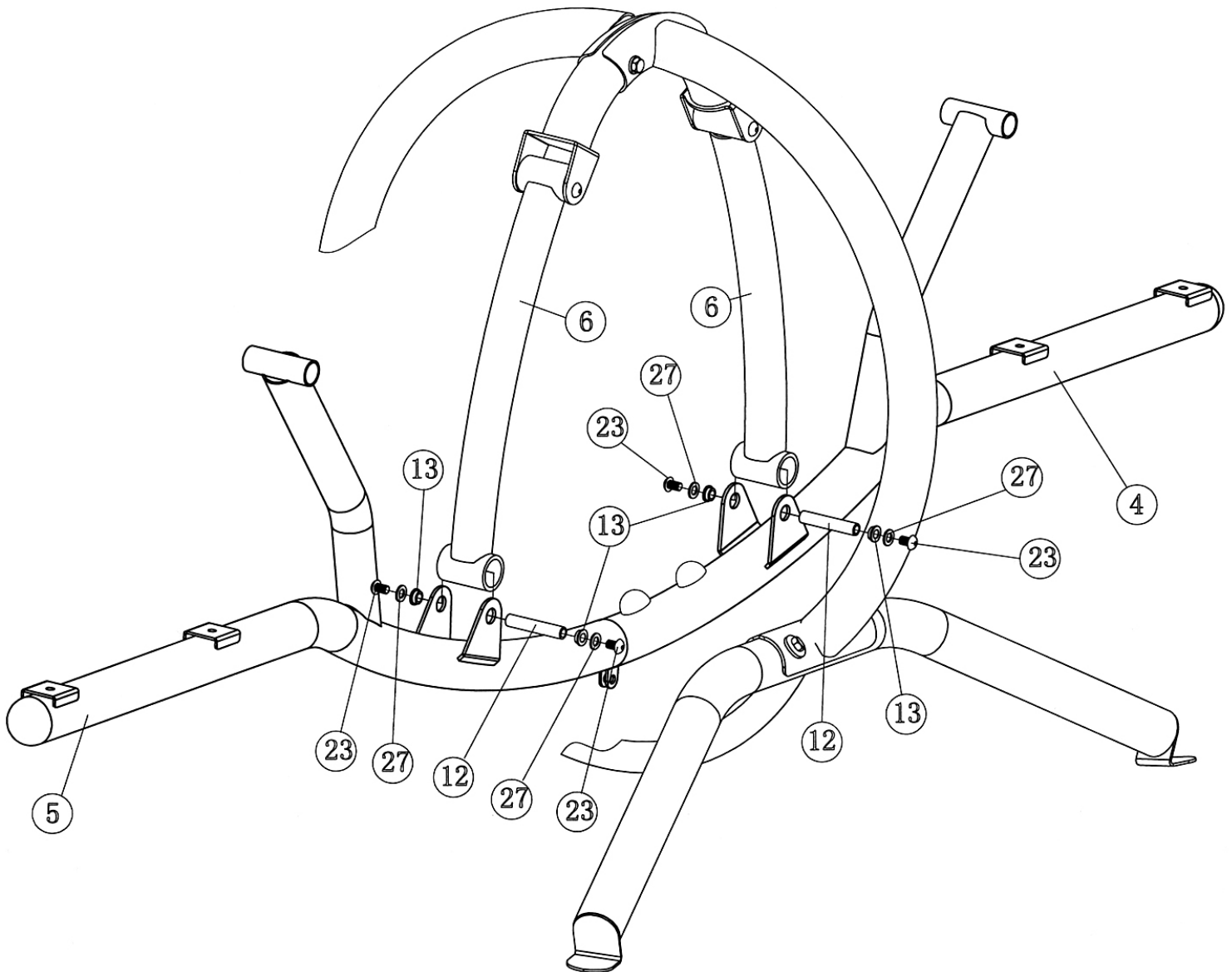
DIAGRAM 3



Step 4 (See Diagram 4)

- A.) Note: Help of another person is strongly recommended for this step.
- B.) Attach the two open brackets on the Right and Left Seat Supports (#4 & #5) to the pivot on the two Swing Arms (#6).
- C.) Insert an Axle (#12) through the holes. Secure each end of Axle with one M10 x 5/8" Allen Bolt (#23), \varnothing 3/4" Washer (#27), and Bushing (#13).

DIAGRAM 4

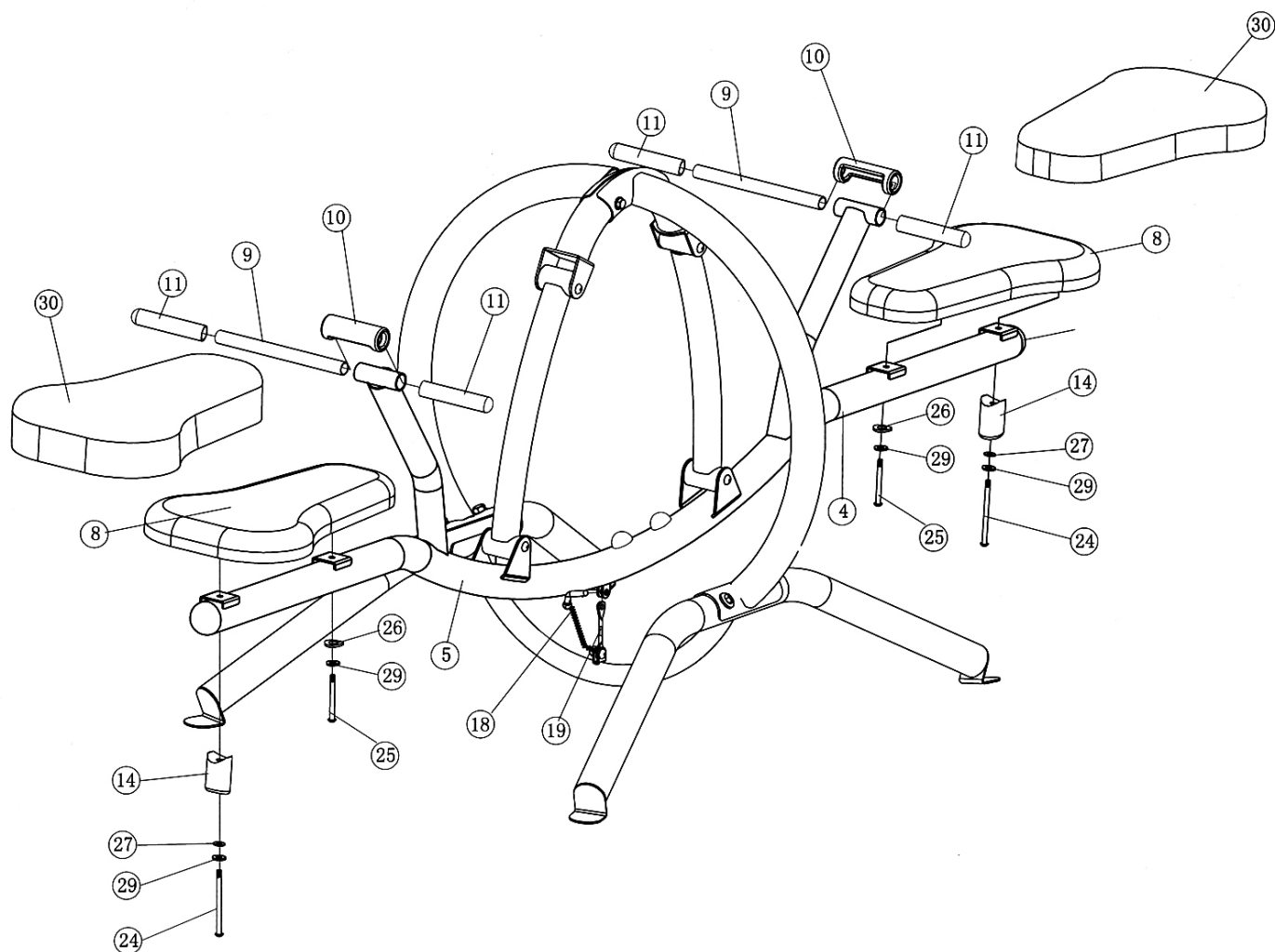


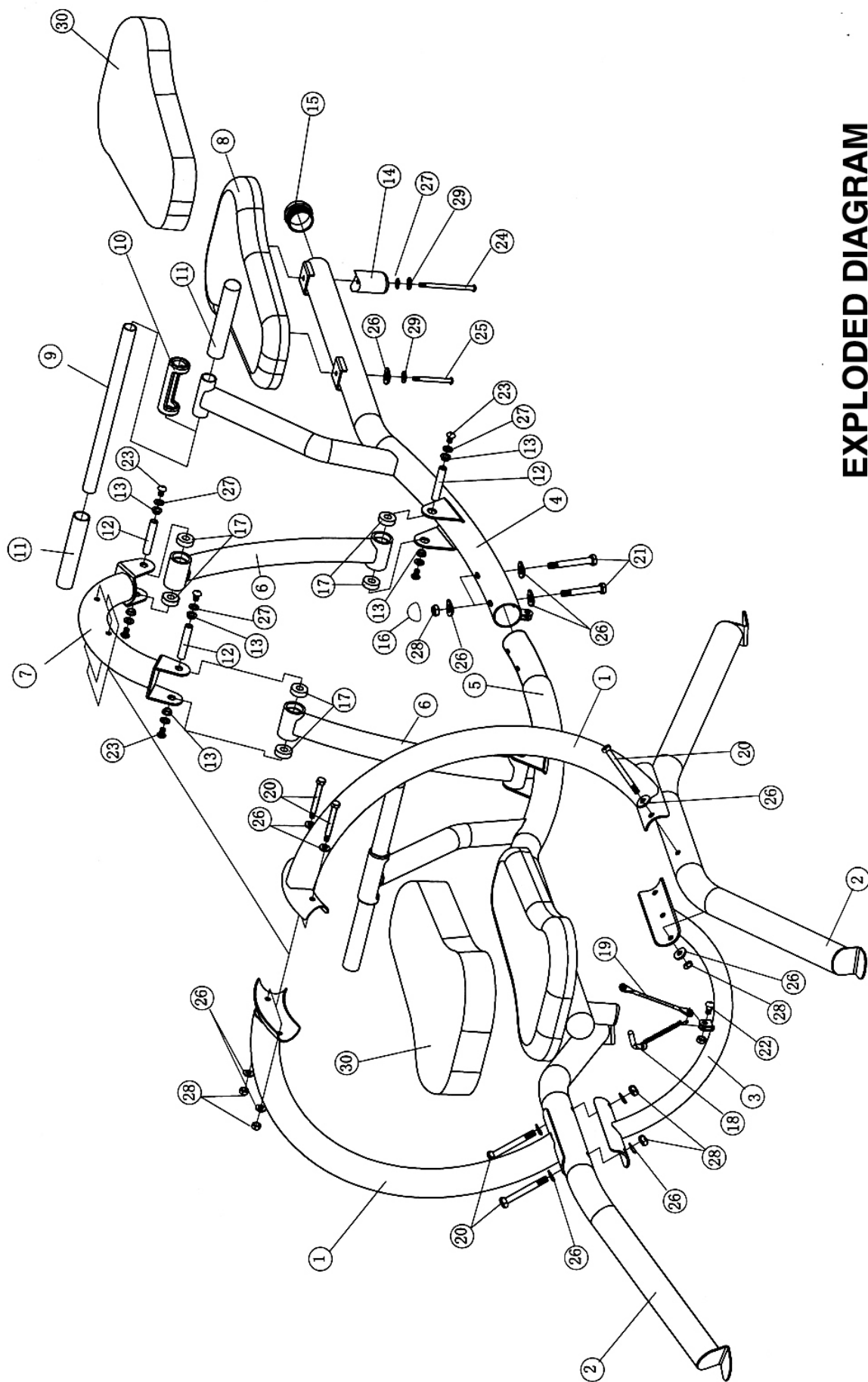
STEP 5 (See Diagram 5)

- A.) Place a Seat Pad (#8) onto the Left Seat Support (#5). Secure the front hole on the Left Seat Support with one M10 x 3 3/8" Allen Bolt (#25), Ø 3/4" Lock Washer (#29), and Ø 3/4" Bent Washer (#26). Secure the rear hole with one M10 x 4 1/8" Allen Bolt (#24), Ø 3/4" Lock Washer (#29), Ø 3/4" Washer (#27), and Rubber Bumper (#14).

Cover the Seat Pad by Seat Pad Cover (#30) when the Teeter Totter is not in use.

- B.) Attach the Handle Cover (#10) to the tube on the Left Seat Support. Align the holes and insert the Handlebar (#9) halfway through the tube. Push two Handlebar Grips (#11) onto the tube from both ends.
- C.) Repeat Procedures A & B above to install the other side.
- D.) To lock the Teeter Totter while not in use, align the end of the Cable Strap to the open bracket underneath the Right Seat Support then insert the L-shaped Lock Pin (#18) through the holes. Remove the Pin when ready to use the Teeter Totter.





EXPLODED DIAGRAM

Parts list

KEY NO.	DESCRIPTION	Q'ty
1	Main Frame	2
2	Base Stabilizer	2
3	Cross Brace	1
4	Right Seat Support	1
5	Left Seat Support	1
6	Swing Arm	2
7	Swing Base	1
8	Seat Pad	2
9	Handlebar	2
10	Handle Cover	2
11	Handlebar Grip	4
12	Axle	4
13	Bushing	8
14	Rubber Bumper	2
15	Seat Support End Cap	2
16	Nut Cover	2
17	Ball Bearing	8
18	L-shaped Lock Pin	1
19	Cable Strap	1
20	M10 x 3 3/8" Hex Bolt	6
21	M10 x 3" Hex Bolt	2
22	M10 x 1" Allen Bolt	1
23	M10 x 5/8" Allen Bolt	8
24	M10 x 4 1/8" Allen Bolt	2
25	M10 x 3 3/8" Allen Bolt	2
26	Ø 3/4" Bent Washer	18
27	Ø 3/4" Washer	10
28	M10 Aircraft Nut	9
29	Ø 3/4" Lock Washer	4
30	Seat Pad Cover	2

Operation Tips

Observing the following statements and warnings reduces the likelihood of serious or fatal injury.

1. Only two people are allowed to use the teeter totter at the same time with a combined weight of no more than 400 lbs.
2. On-site adult supervision for children of all ages.
3. Instruct children not to walk close to, in front of, behind, or between moving items.
4. Instruct children not to swing empty seats.
5. Instruct children to sit in the center of the seat with their full weight on the seat and hold on to the handlebar at all times.
6. Instruct children not to use the equipment in a manner other than intended.
7. Instruct children not to get off equipment while it is in motion.
8. Dress children appropriately with well fitted shoes and avoid ponchos, scarfs, and other loose-fitting clothing that is potentially hazardous while using equipment.
9. Instruct children not to use the equipment when the equipment is wet.
10. Instruct children not to attach items to the equipment, such as, but not limited to, jump ropes, clothesline, pet leashes, cables and chain as they may cause a strangulation hazard.
11. Lock the teeter-totter with the strap locks when not in use.

IMPEX[®] INC.

LIMITED WARRANTY

IMPEX INC. ("IMPEX[®]") warrants this product to be free from defects in workmanship and material, under normal use and service conditions, for a period of 2 YEARS from the date of purchase. This warranty extends only to the original purchaser. IMPEX's obligation under this Warranty is limited to replacing or repairing, at IMPEX's option.

All returns must be pre-authorized by IMPEX. Pre-authorization may be obtained by calling IMPEX Customer Service Department at 1-800-999-8899. All freights on products returned to IMPEX must be prepaid by the customer. This warranty does not extend to any product or damage to a product caused by or attributable to freight damage, abuse, misuse, improper or abnormal usage or repairs not provided by an IMPEX authorized service center or for products used for heavy commercial or rental purposes. No other warranty beyond that specifically set forth above is authorized by IMPEX.

IMPEX is not responsible or liable for indirect, special or consequential damages arising out of or in connection with the use or performance of the product or other damages with respect to any economic loss, loss of property, loss of revenues or profits, loss of enjoyments or use, costs of removal, installation or other consequential damages or whatsoever natures. Some states do not allow the exclusion or limitation of incidental or consequential damages. Accordingly, the above limitation may not apply to you.

The warranty extended hereunder is in lieu of any and all other warranties and any implied warranties of merchantability or fitness for a particular purpose is limited in its scope and duration to the terms set forth herein. Some states do not allow limitations on how long an implied warranty lasts. Accordingly, the above limitation may not apply to you.

This warranty gives you specific legal right. You may also have other rights which vary from state to state. Register on-line at www.impex-fitness.com

IMPEX[®] INC.
14777 Don Julian Rd.,
City of Industry, CA 91746

ORDERING REPLACEMENT PARTS

Replacement parts can be ordered by calling our Customer Service Department toll-free at **1-800-999-8899** during our regular business hours: Monday through Friday, 9 am until 5 pm Pacific standard time.

info@impex-fitness.com

When ordering replacement parts, always give the following information.

1. Model
2. Description of Part
3. Part Number
4. Date of Purchase