

NOTE:
Please read all instructions
carefully before using this
product

Table of Content

Safety Notice

Hardware Identifier

Assembly Instruction

Parts List

Warranty

Ordering Parts

Model
MS-91

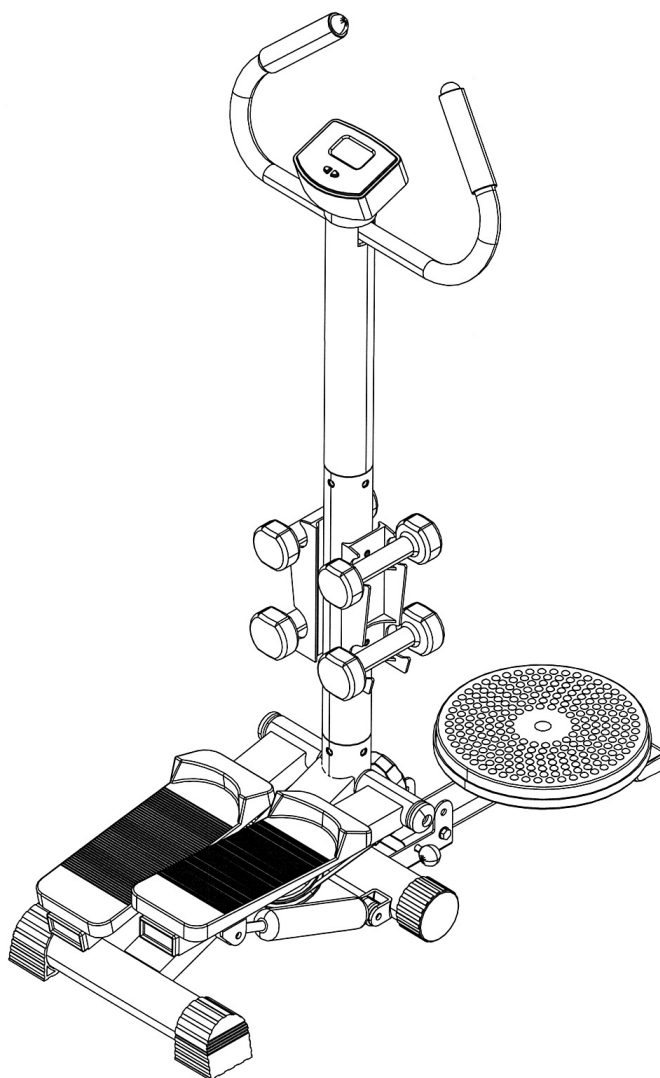
Retain This
Manual for
Reference

06-21-06

OWNER'S
MANUAL



MARCY PLATINUM STEPPER MS-91



IMPEX[®] Inc.

14777 DON JULIAN RD., CITY OF INDUSTRY, CA 91746

Tel: (800) 999-8899 Fax: (626) 961-9966

www.impex-fitness.com

info@impex-fitness.com

TABLE OF CONTENTS

BEFORE YOU BEGIN.....	1
IMPORTANT SAFETY NOTICES.....	2
HARDWARE IDENTIFIER.....	4
ASSEMBLY INSTRUCTIONS.....	5
EXPLODED DIAGRAM.....	7
PARTS LIST.....	8
WARRANTY.....	9
ORDERING PARTS.....	9

BEFORE YOU BEGIN

Thank you for selecting the MARCY PLATINUM MS-91 MINI STEPPER by IMPEX[®] Inc. For your safety and benefit, read this manual carefully before using the machine. As a manufacturer, we are committed to provide you complete customer satisfaction. If you have any questions, or find there are missing or damaged parts, we guarantee you complete satisfaction through direct assistance from our factory. To avoid unnecessary delays, *please call our TOLL-FREE customer service number*. Our Customer Service Agents will provide immediate assistance to you.

Toll-Free Customer Service Number

1-800-999-8899

Mon. - Fri. 9 a.m. - 5 p.m. PST

www.impex-fitness.com

info@impex-fitness.com

IMPORTANT SAFETY NOTICE

PRECAUTIONS

This exercise machine is built for optimum safety. However, certain precautions apply whenever you operate a piece of exercise equipment. Be sure to read the entire manual before you assemble or operate your machine. In particular, note the following safety precautions:

1. **Keep children and pets away from the machine at all times. DO NOT leave children unattended in the same room with the machine.**
2. Only one person at a time should use the machine.
3. If the user experiences dizziness, nausea, chest pain, or any other abnormal symptoms, STOP the workout at once. CONSULT A PHYSICIAN IMMEDIATELY.
4. Position the machine on a clear, leveled surface. DO NOT use the machine near water or outdoors.
5. Keep hands away from all moving parts.
6. Always wear appropriate workout clothing when exercising. DO NOT wear robes or other clothing that could become caught in the machine. Running or aerobic shoes are also required when using the machine.
7. Use the machine only for its intended use as described in this manual. DO NOT use attachments not recommended by the manufacturer.
8. Do not place any sharp object around the machine.
9. Disabled person should not use the machine without a qualified person or physician in attendance.
10. Before using the machine to exercise, always do stretching exercises to properly warm up.
11. Never operate the machine if the machine is not functioning properly.
12. Maximum user weight: 300 lbs.

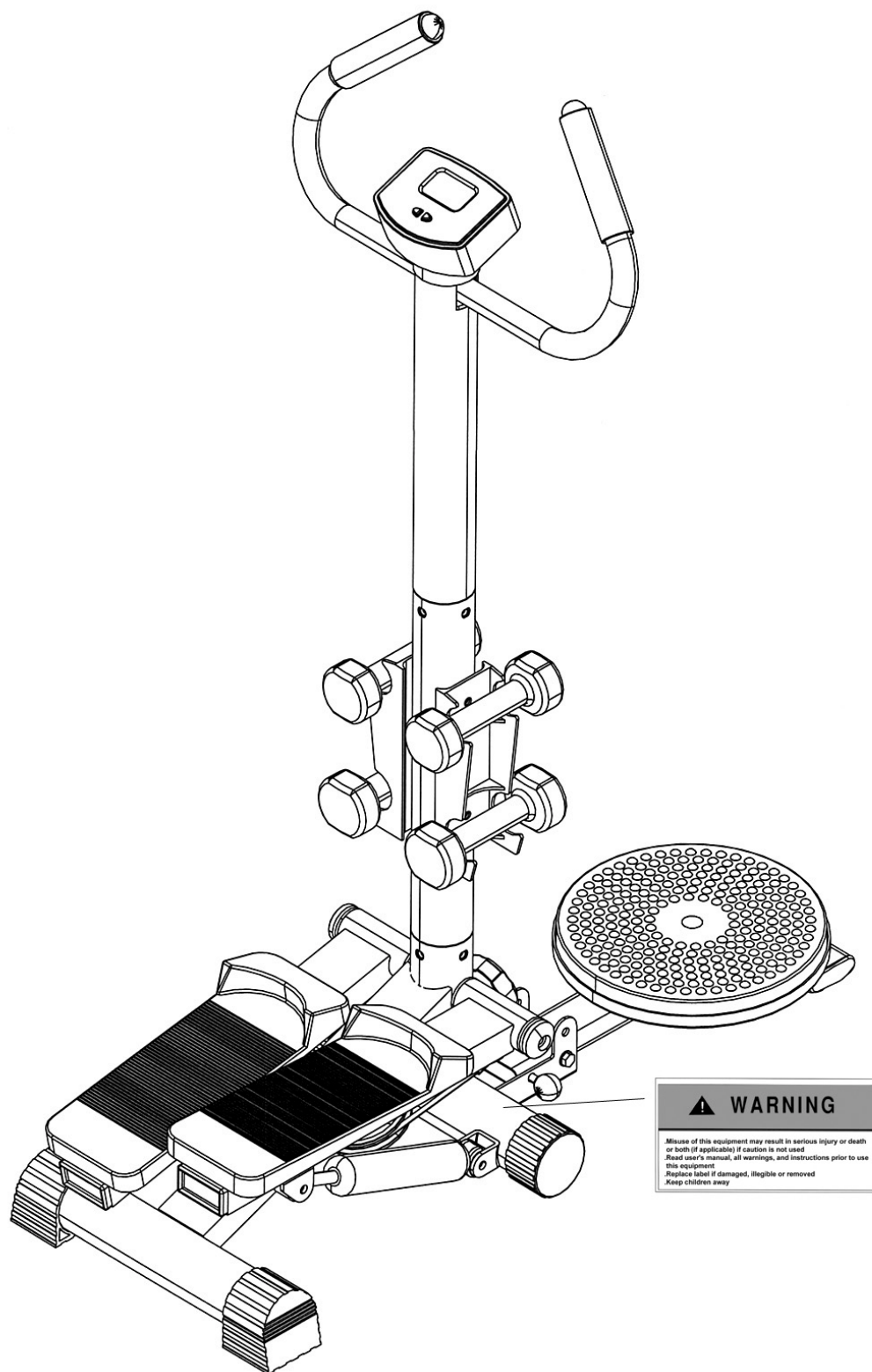
CARE AND MAINTENANCE

1. Inspect and tighten all parts before using the machine.
2. The machine can be cleaned using a damp cloth and mild non-abrasive detergent. DO NOT use solvents.
3. Keep fingers away from all Pinch Points.

WARNING: BEFORE BEGINNING ANY EXERCISE PROGRAM, CONSULT YOUR PHYSICIAN. THIS IS ESPECIALLY IMPORTANT FOR INDIVIDUALS OVER THE AGE OF 35 OR PERSONS WITH PRE-EXISTING HEALTH PROBLEMS. READ ALL INSTRUCTIONS BEFORE USING ANY FITNESS EQUIPMENT. IMPEX INC. ASSUMES NO RESPONSIBILITY FOR PERSONAL INJURY OR PROPERTY DAMAGE SUSTAINED BY OR THROUGH THE USE OF THIS PRODUCT.

SAVE THESE INSTRUCTIONS.

WARNING LABEL REPLACEMENT



The Warning Label shown here has been placed on the Base Frame.
If the label is missing or illegible, please call customer service at 1-800-999-8899 for replacement.
Apply the label in the location shown.

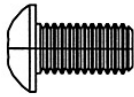
HARDWARE PACK



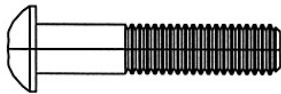
#40 M6 x 3/8" Screw (Qty 1)



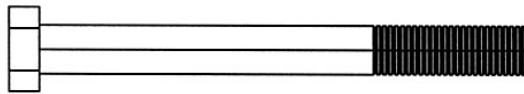
#39 M6 x 5/8" Philips Screw (Qty 4)



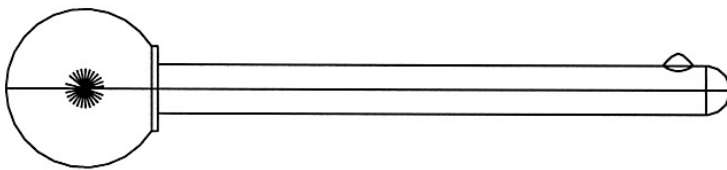
#35 M8 x 5/8" Allen Bolt (Qty 10)



#36 M8 x 1 5/8" Allen Bolt (Qty 2)



#50 M8 x 3 1/8" Hex Bolt (Qty 1)



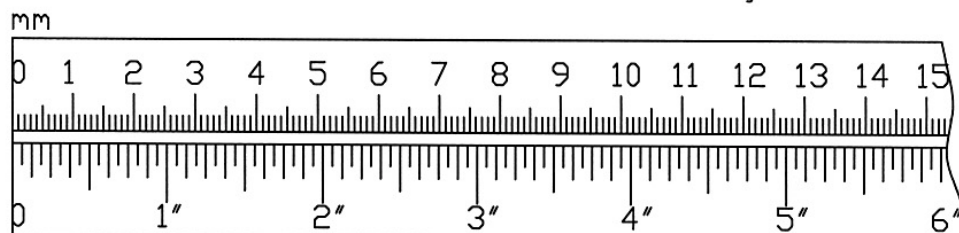
#51 Lock Pin (Qty 1)



#27 ϕ 5/8" Washer
(Qty 24)



#38 M8 Aircraft Nut
(Qty 7)



ASSEMBLY INSTRUCTION

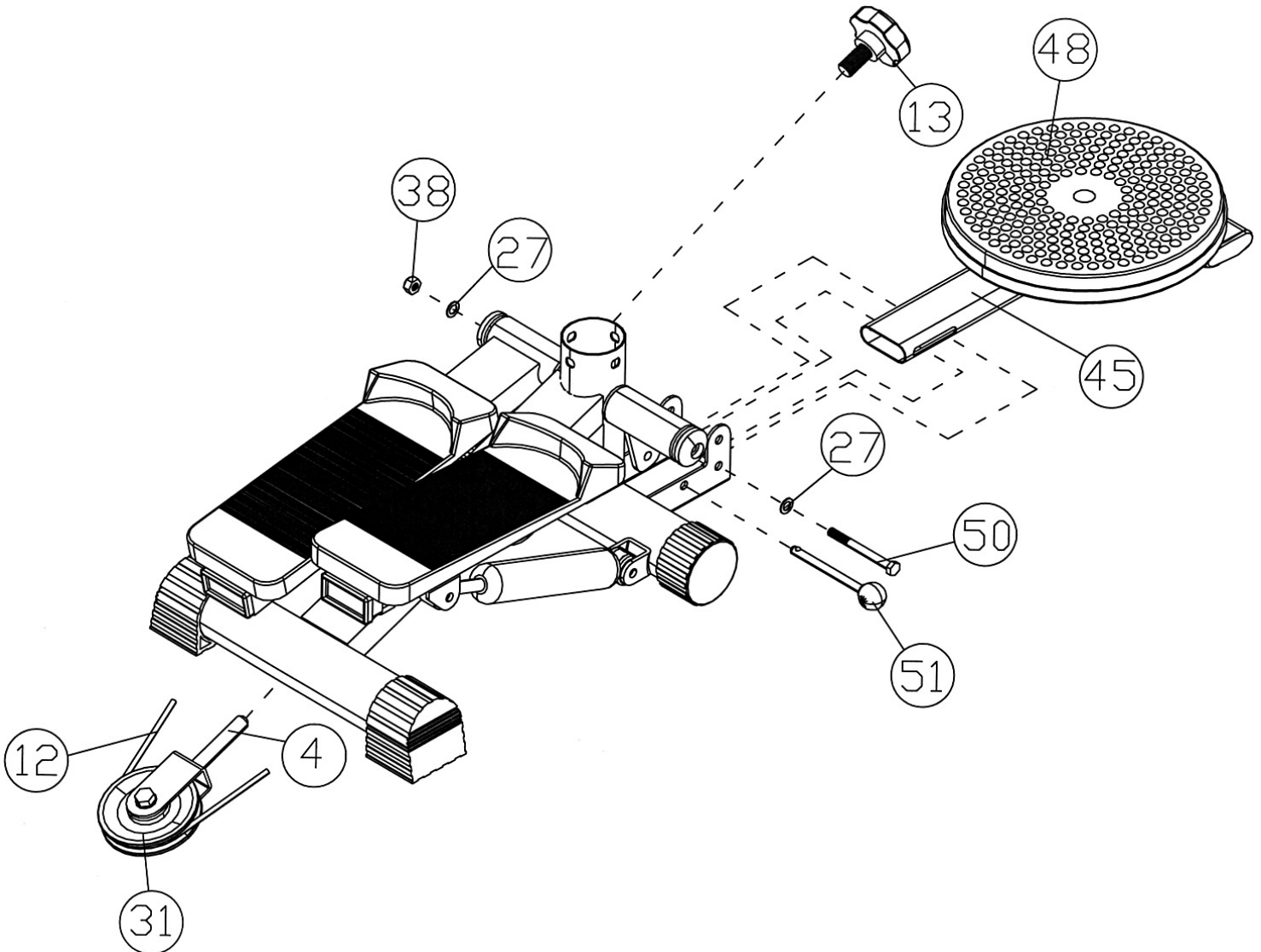
Tools Required Assembling the Machine: Adjustable Wrench and Allen Wrench

NOTE: It is strongly recommended two or more people assembling this machine to avoid possible injuries.

STEP 1 (See Diagram 1)

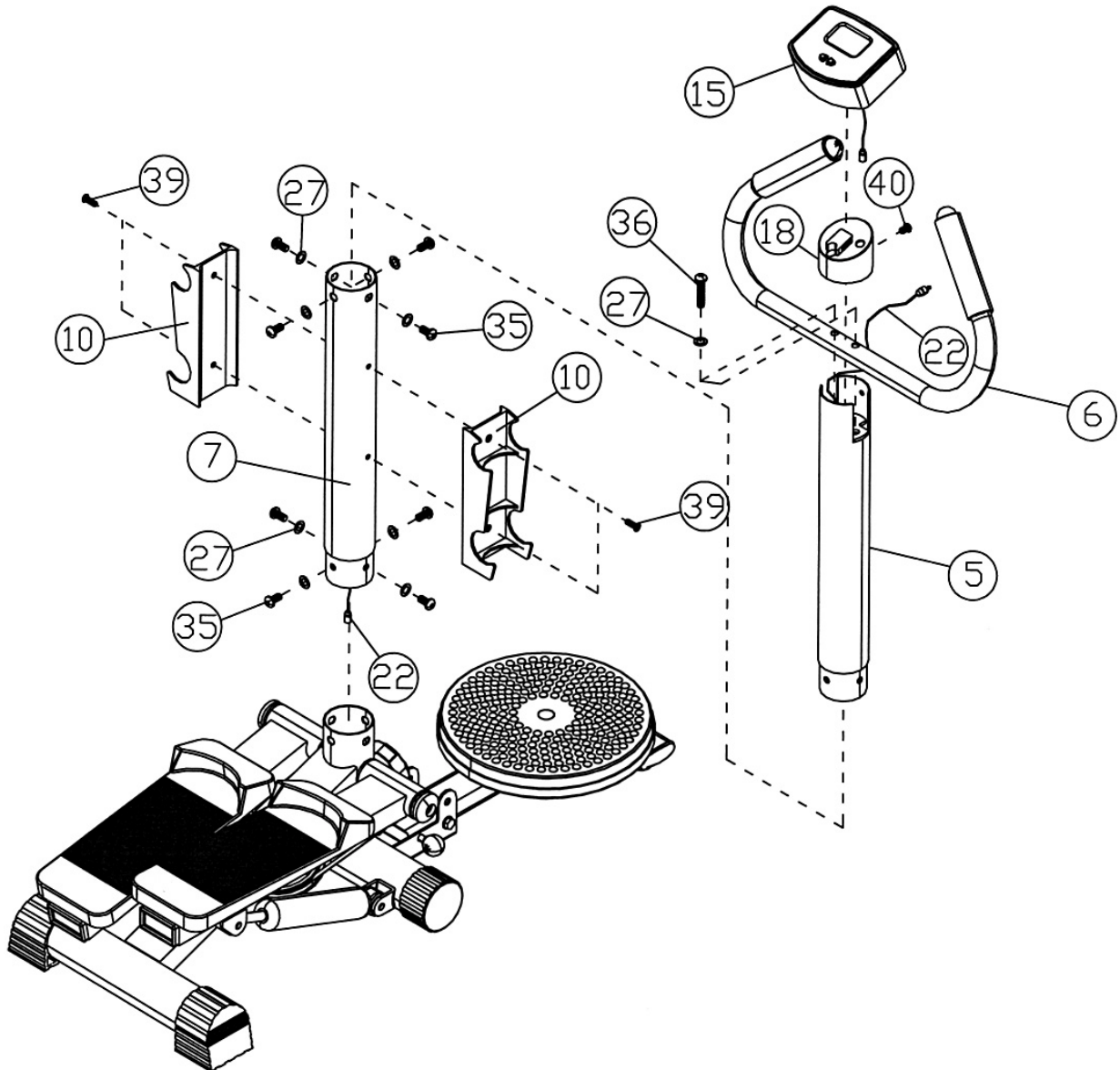
- A.) Lift Up the Right Pedal. Attach the Lock Knob (#13) to the front of the Base Frame. Turn the Knob clockwise all the way in to secure the Pedals. Note: The height of the pedals can be adjusted by turning the Knob clockwise to increase the height and counterclockwise to decrease the height. Make sure the cable (#12) goes around the Pulley (#31) on the Pulley Bracket (#4).
- B.) Attach the Twister Plate (#48) to the bracket in front of the Base Frame. Secure it with one M8 x 3 1/8" Hex Bolt (#50), two Ø 5/8" Washers (#27), and one M8 Aircraft Nut (#38). Do not over tighten the Nut and Bolt. The Twister Plate should be able to slide on the Bolt. Secure the Twister Plate with a Lock Pin (#51).
- C.) When Storing the Twister Plate, pull out the Lock Pin then pull the Plate out and upward to vertical position. Re-insert the Lock Pin to secure the Plate.

DIAGRAM 1

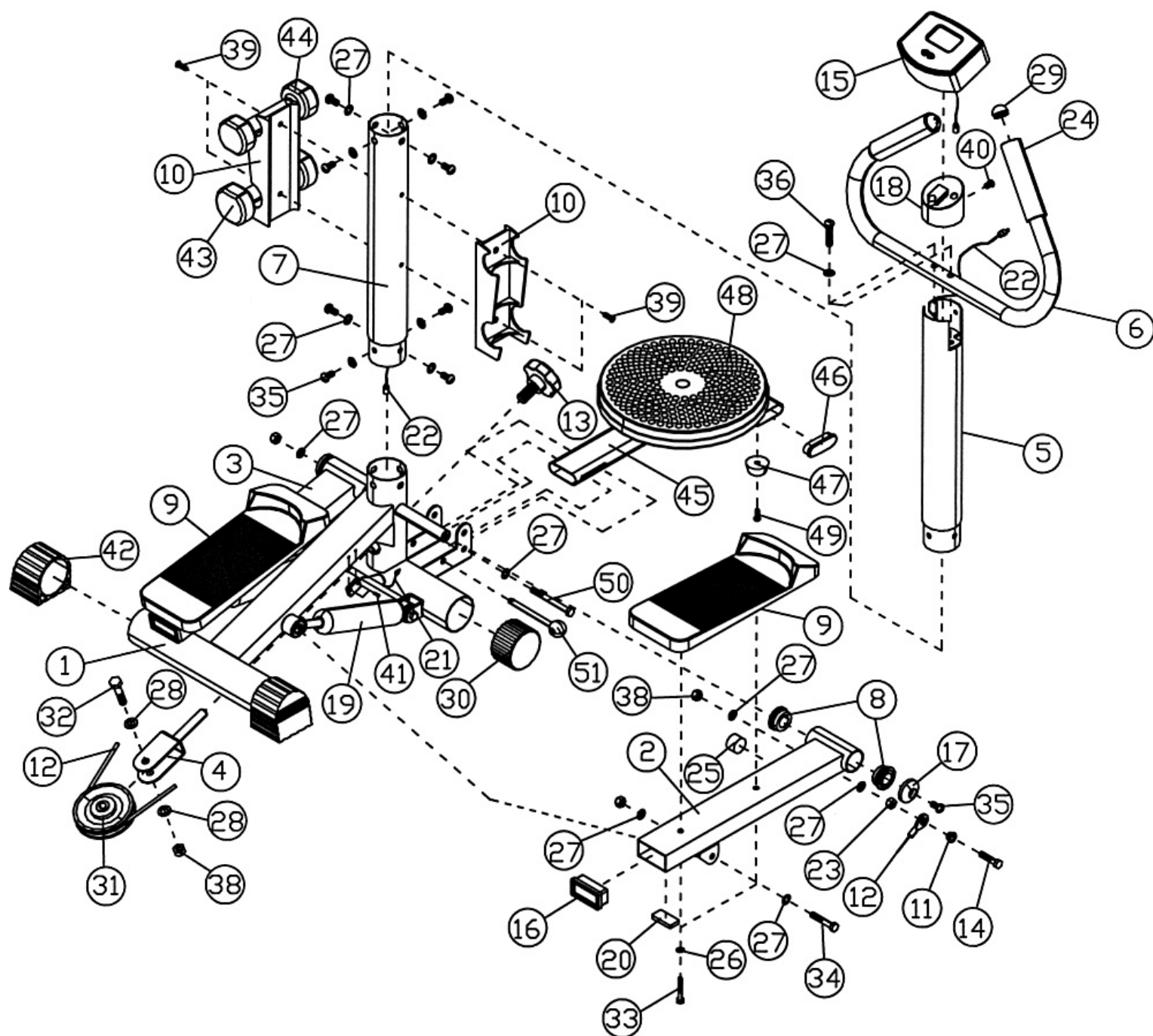


STEP 2 (See Diagram 2)

- A.) Slide the Computer Wire (#22) through the Lower Frame (#7). Connect the Computer Wire to the Sensor Wire coming out from the Main Base Frame. Attach the Lower Frame to the opening on the Base Frame. Secure it with four M8 x 5/8" Allen Bolts (#35) and Ø 5/8" Washers (#27). Note: If the holes on the Frame are hard to align, spray light lubricant such as WD-40 to help reduce the friction.
- B.) Attach two Dumbbell Racks (#10) to the Lower Frame. Secure it with four M6 x 5/8" Philips Screws (#39).
- C.) Draw the Computer Wire (#22) through the Upper Frame (#5). Attach the Upper Frame to the Lower Frame. Secure it with four M8 x 5/8" Allen Bolts (#35) and Ø 5/8" Washers (#27).
- D.) Attach the Handlebar (#6) to the top of the Upper Frame. Secure it with two M8 x 1 5/8" Allen Bolts (#36) and Ø 5/8" Washers (#27).
- E.) Pull the Computer Wire through the Timer Stand (#18). Connect the Computer Wire to the Computer (#15). Attach the Timer Stand to the Upper Frame. Secure it with M6 x 3/8" Screw (#40). Slide the Computer onto the Timer Stand.
- F.) Slide two Foam Grips (#24) onto the Handle Bar (#6).

DIAGRAM 2

EXPLODED DIAGRAM



Parts list

KEY NO.	DESCRIPTION	Q'ty
1	Base Frame	1
2	Right Pedal Arm	1
3	Left Pedal Arm	1
4	Pulley Bracket	1
5	Upper Frame	1
6	Handlebar	1
7	Lower Frame	1
8	Ø 1 ½" Bushing	4
9	Pedal	2
10	Dumbbell Rack	2
11	Ø 5/8" Bushing	2
12	Cable	1
13	Lock Knob	1
14	M8 x 1 3/8" Hex Bolt	2
15	Computer	1
16	2 3/8" x 1 1/8" End Cap	2
17	Axle Cover	2
18	Timer Stand	1
19	Hydraulic Shock	2
20	1 5/8" x ¾" Rubber Bumper	2
21	Sensor Wire	1
22	Computer Wire	1
23	M8 Regular Nut	2
24	Foam Grip	2
25	Magnet	1
26	Ø ½" Washer	4
27	Ø 5/8" Washer	24
28	Ø ¾" Washer	2
29	Ø 1" End Cap	2
30	Ø 2 3/8" End Cap	2
31	Pulley	1
32	M10 x 1 ¾" Hex Bolt	1
33	M6 x 1 5/8" Hex Bolt	4
34	M8 x 1 ¾" Hex Bolt	4
35	M8 x 5/8" Allen Bolt	10
36	M8 x 1 5/8" Allen Bolt	2
37	M10 Aircraft Nut	1
38	M8 Aircraft Nut	7
39	M6 x 5/8" Philips Screw	4
40	M6 x 3/8" Screw	1
41	ST2 Screw	2
42	Ø 2 3/8" Cone-shaped End Cap	2
43	3 lb. Dumbbell	2
44	2 lb. Dumbbell	2
45	Twist Plate Stand	1
46	¾" x 2 3/8" End Cap	2
47	Rubber Bumper	2
48	Twist Plate	1
49	M6 x 5/8" Round Screw	2
50	M8 x 3 1/8" Hex Bolt	1
51	Lock Pin	1

IMPEX[®] INC.

LIMITED WARRANTY

IMPEX Inc. ("IMPEX[®]") warrants this product to be free from defects in workmanship and material, under normal use and service conditions, for a period of two years on the Frame from the date of purchase. This warranty extends only to the original purchaser. IMPEX's obligation under this Warranty is limited to replacing or repairing, at IMPEX's option.

All returns must be pre-authorized by IMPEX. Pre-authorization may be obtained by calling IMPEX Customer Service Department at 1-800-999-8899. All freights on products returned to IMPEX must be prepaid by the customer. This warranty does not extend to any product or damage to a product caused by or attributable to freight damage, abuse, misuse, improper or abnormal usage or repairs not provided by an IMPEX authorized service center or for products used for commercial or rental purposes. No other warranty beyond that specifically set forth above is authorized by IMPEX.

IMPEX is not responsible or liable for indirect, special or consequential damages arising out of or in connection with the use or performance of the product or other damages with respect to any economic loss, loss of property, loss of revenues or profits, loss of enjoyments or use, costs of removal, installation or other consequential damages or whatsoever natures. Some states do not allow the exclusion or limitation of incidental or consequential damages. Accordingly, the above limitation may not apply to you.

The warranty extended hereunder is in lieu of any and all other warranties and any implied warranties of merchantability or fitness for a particular purpose is limited in its scope and duration to the terms set forth herein. Some states do not allow limitations on how long an implied warranty lasts. Accordingly, the above limitation may not apply to you.

This warranty gives you specific legal right. You may also have other rights which vary from state to state.

IMPEX[®] INC.
14777 Don Julian
City of Industry, CA 91746

ORDERING REPLACEMENT PARTS

Replacement parts can be ordered by calling our Customer Service Department toll-free at **1-800-999-8899** during our regular business hours: Monday through Friday, 9 am until 5 pm Pacific standard time.

www.impex-fitness.com
info@impex-fitness.com

When ordering replacement parts, always give the following information.

1. Model
2. Description of Parts
3. Part Number
4. Date of Purchase